

iCN 630

User Manual



NAVMAN

---

## WELCOME

Congratulations on the purchase of your iCN 630 In-Car Navigation Unit. Whether you travel frequently in your own country, or need to find your way around overseas, this unit will direct you to your destination without the need for map books and second-hand instructions.

The Global Positioning System is available free of charge, at any time, and is accurate to within 5 m. The maps in the iCN 630 provide street level detail allowing door to door navigation – they even include points of interest such as hotels, railway stations and airports. With this unit, you will never be lost again!

Use this manual to help you install your unit, learn how to operate it effectively and safely, plus find out all of the different features available to you.

---

## IMPORTANT NOTICE





When using your iCN 630 in a vehicle, it is your sole responsibility to place, secure, and use the device in a manner that will not cause accidents, personal injury or property damage, or in any manner obstruct your view or vehicle safety equipment. The user of this product is solely responsible for observing safe driving practices. Do not operate your iCN 630 while driving. Park the vehicle first. It is your sole responsibility that the vehicle mount installation instructions are read carefully, understood, and used consistent with the laws of operation for each country in which you use the device.

Navman NZ Limited disclaim all liability for any use of this product in a way that may cause accidents, damage or that may violate the law.
---

---

## SAFETY FIRST

It is your sole responsibility to adhere to the following safety instructions at all times.

-  Do not operate this unit while driving.
-  This unit must be placed in a position where it cannot obstruct the driver's view of the road.
-  This unit must not interfere with the normal operation of any airbags or other vehicle safety equipment.
-  For security purposes and to avoid overheating, do not leave this unit on the dash or windscreen while your vehicle is unattended, especially in strong sunlight. Do not use or handle if the unit is hot - leave it to cool out of the sun.

---

# CONTENTS

<b>1</b>	<b>WHAT IS GPS?</b>	<b>5</b>
<b>2</b>	<b>UNPACKING THE iCN 630</b>	<b>6</b>
	Memory Cards.....	7
	Other Accessories.....	7
<b>3</b>	<b>INSTALLING SOFTWARE AND NEW MAPS</b>	<b>8</b>
	Installing iCN Desktop.....	8
	Step 1: Connecting the iCN 630 to Your Computer.....	10
	Windows XP Users.....	11
	Windows 2000 Users.....	12
	Windows ME/98SE.....	13
	Step 2: Installing iCN Application.....	14
	Step 3: Installing Maps.....	15
	Step 4: Reading User Manuals and Quick Start Guides.....	17
	Other iCN 630 Options.....	17
	Backing up Device Settings.....	17
	Visit Navman Website.....	18
<b>4</b>	<b>INSTALLING THE iCN 630 IN YOUR VEHICLE</b>	<b>19</b>
	Suction Mount to Windshield.....	19
	Suction or Adhesive Mount to Dash.....	21
	Screw Mount to Dash.....	23
<b>5</b>	<b>CONTROLS AND KEYBOARD</b>	<b>25</b>
	Using the Control Buttons.....	25
	Using the Menu.....	26
	Moving around the Settings Screens.....	26
	Entering text with the On-Screen Keyboard.....	27
	Changing the Brightness and Volume.....	28
<b>6</b>	<b>GETTING STARTED</b>	<b>29</b>
	Powering Up.....	29
	Main Menu.....	29
	Driver Protection.....	29
	Getting a GPS Fix.....	30
<b>7</b>	<b>SETTING YOUR DESTINATION</b>	<b>31</b>
	Using a Shortcut.....	31
	Setting a New Destination.....	32
	- Heading to an Address.....	32
	- Heading to an Intersection.....	33
	- Heading to a Point of Interest.....	34

	Using a saved Favourite.....	36
	Heading to a Recently Used Address.....	37
	Straight from the Map.....	38
<b>8</b>	<b>VIEWING YOUR ROUTE</b> .....	<b>39</b>
	Map Browser.....	39
	Navigation Map.....	40
	Next Instruction.....	41
	Next Four Instructions.....	42
	Back-on-Track™ Feature.....	42
	Automatic Restart Feature.....	42
<b>9</b>	<b>PROGRAMMING SHORTCUTS</b> .....	<b>43</b>
	Adding a New Shortcut.....	43
	Deleting a Shortcut.....	44
<b>10</b>	<b>PROGRAMMING FAVOURITES</b> .....	<b>45</b>
	Adding a New Favourite.....	45
	Editing or Deleting a Saved Favourite.....	46
<b>11</b>	<b>USING THE GPS STATUS INFORMATION</b> .....	<b>48</b>
	GPS Reception.....	48
	Satellite Signal Strengths.....	49
	Satellite Positions.....	49
<b>12</b>	<b>MODIFYING THE SETTINGS</b> .....	<b>50</b>
	Display Settings.....	50
	Route and Guidance Settings.....	50
	Points of Interest Settings.....	51
	GPS Settings.....	52
	User Settings.....	53
	Maps.....	53
<b>13</b>	<b>AUTOMATIC ROUTE SIMULATOR</b> .....	<b>54</b>
<b>14</b>	<b>ACCESSORIES</b> .....	<b>55</b>
	External or Re-radiating Antennae.....	55
	Memory Cards.....	56
	Memory Card Writers.....	56
<b>15</b>	<b>AVAILABLE MAPS</b> .....	<b>57</b>
<b>16</b>	<b>FREQUENTLY ASKED QUESTIONS</b> .....	<b>58</b>
<b>17</b>	<b>TROUBLESHOOTING</b> .....	<b>59</b>
<b>18</b>	<b>ADDITIONAL INFORMATION</b> .....	<b>61</b>
	End User and Warranty Agreement.....	61
	Contact Us.....	61
	Copyright.....	61

# 1 WHAT IS GPS?

---

The Global Positioning System (GPS) is a network of satellites launched by the US military in the 1970's. The satellites continuously transmit accurate time and position information, which is freely used by commercial and military applications worldwide. GPS receivers such as the iCN 630 are designed to pick up the high frequency radio signals from these satellites, and use the information to determine your exact location. Today, there are many applications that use GPS, from marine to automotive, aviation and military.

There are 24 satellites in total, orbiting the earth at around 12,000 miles. While a GPS receiver can detect signals from up to 12 satellites at any one time, only three are needed to provide the two-dimensional position or "fix" (latitude and longitude) that is required for vehicle and marine navigation systems. Aviation applications also need altitude and therefore need information from at least four satellites.

The iCN 630 In-Car navigation unit is designed specifically to use GPS information to find your current position, and to calculate the best route to your desired destination using the road maps stored in its memory. The iCN 630 will then guide you with voice and visual commands to your destination using the continuous stream of GPS data to track your position as you take a trip.

## 2 UNPACKING THE iCN 630

Here's what you should find in the box. If there is anything missing, contact your retailer for assistance.



Key:

- 1 - iCN 630 unit with integral GPS receiver.
- 2 - CD-ROMs includes:
  - smartMAP™ In-Car Digital Navigation Software
  - Maps (refer to Section 15 for the maps included in your country)
  - User Manual and Quick Start Guide in Adobe Acrobat PDF format
  - Adobe Acrobat Reader.
- 3 - Vehicle windshield and dashboard mounting bracket:
  - (a) Ball foot
  - (b) Locking nut
  - (c) Mounting clip
  - (d) Sucker pad
  - (e) Retainer ring
  - (f) Screw plate
  - (g) Screws x 3
  - (h) Screw caps x 3.
- 4 - 12/24 V Vehicle power cable.
- 5 - Mains power pack for indoor programming, demonstration and training.
- 6 - USB cable for map and application downloading from a PC.
- 7 - Protective carry case and screen cleaner.
- 8 - Quick start guide.



## Memory Cards

The iCN 630 unit itself has 64 Mbytes of internal memory available for storing maps. If this is not sufficient for your needs, extra memory in the form of MMC (Multi Media Card) or SD (Secure Digital) memory cards are also available to store additional maps.

A memory card can be plugged into the slot in the top of the iCN 630 unit, and can be purchased in various sizes. The largest card that can be used by the iCN 630 is 256 Mbytes.

For more information on memory cards, refer to Section 14 Accessories.



## Other Accessories

Further accessories are available for your iCN 630 In-Car Navigation Unit. You can purchase the following from your retailer:

- An external antenna – required if your vehicle is fitted with an athermic (heat reflective) or a heated windshield, or for extra GPS performance in weak signal areas.
- Re-radiating antenna – an alternative to the external antenna for vehicles fitted with athermic or heated windshields, or for extra GPS performance in weak signal areas.
- Memory card writer – an external device that connects to your PC and allows you to download maps directly onto an SD or MMC memory card.

For more information on accessories and athermic or heated windshields, refer to Section 14 Accessories.

## 3 INSTALLING SOFTWARE AND NEW MAPS

You will have received a CD-ROM with your iCN 630 unit. The CD-ROM contains software that allows you to:

- Install and upgrade the smartMAP™ software onto your iCN 630 unit.
- Install new maps to your iCN 630 or memory cards.
- Backup any Settings, Shortcuts and Favourites you have saved previously in your iCN 630 unit.

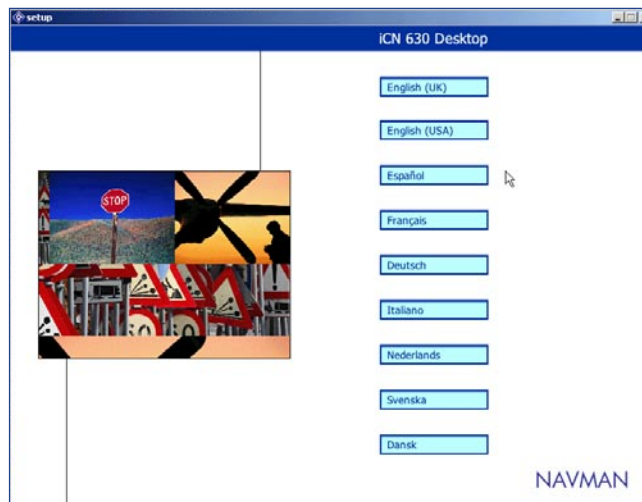
Before you can use any of these features, you firstly need to set up the iCN Desktop software on your PC. You will then be able to download software and maps to your iCN 630 unit via a USB port on your PC.



### Installing iCN Desktop

If the installation wizard does not start automatically, click Start on the Windows taskbar, then click Run... Type d:\setup.exe, then click **OK**. If your CD-ROM drive is assigned to a letter other than "d", type this letter instead.

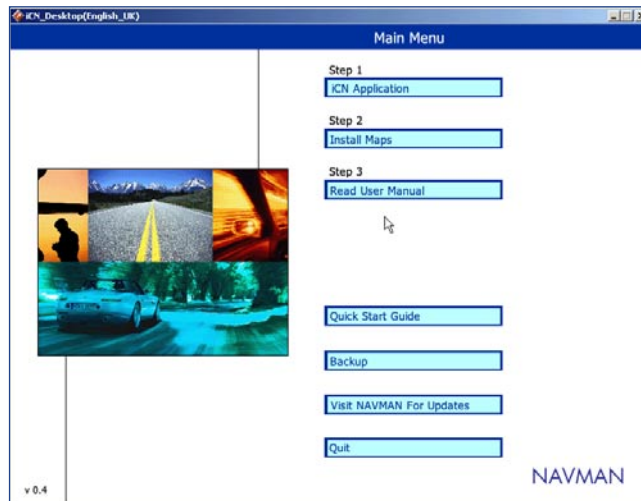
- 1 Place the CD-ROM into the CD-ROM drive on your computer. The iCN 630 Desktop Installation wizard should start.
- 2 The Language Selector screen is displayed. Make your selection by clicking on the language you require.





Once installed, you can start the application in future by creating a Shortcut on your desktop, or clicking Start – Programs – Navman – iCN Desktop from the Windows taskbar.

- 3 Follow the on-screen prompts to complete your License Agreement and load the iCN Desktop application onto your computer.
- 4 Once the wizard has finished the installation, iCN Desktop will automatically start.



You are now ready to personalize your iCN 630 unit. There are four main steps required before you can use your unit.

**Step 1** ..... Connect the iCN 630 to your computer.

**Step 2** ..... Install the smartMAP™ application onto your iCN 630 unit.

**Step 3** ..... Install the maps you require onto your iCN 630 unit.


**Step 4** ..... Read the user manual to familiarize yourself with the functions in the unit.

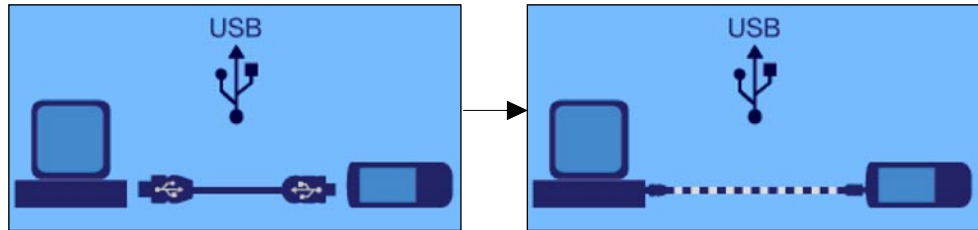
The following sections will lead you through these steps, and will also explain the other functions available from the iCN Desktop application.



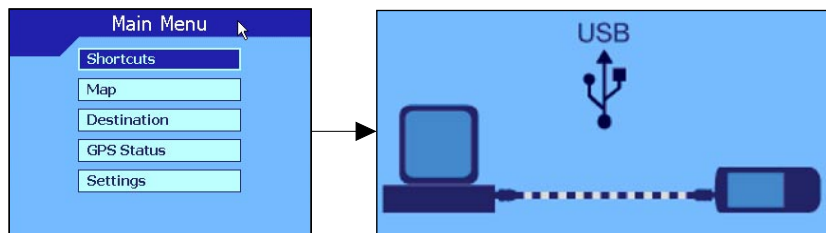
### Step 1: Connecting the iCN 630 to Your Computer

This will enable your computer to communicate with the iCN 630 unit.

- 1 Ensure that the iCN Desktop is running on your computer.
- 2 Plug the mains power adaptor (supplied) into a power socket. Plug the other end into the socket on the left-hand side of the iCN 630 unit.
- 3 Turn on the iCN 630 by holding down the MENU/Power  button on your unit for approximately 1 second.



- 4 If this is the first time you have powered up your iCN 630 unit, the above screen is displayed prompting you to connect the USB cable (supplied). Plug the USB cable into a USB port on your computer. Plug the other end into the underside of the iCN 630 unit. The display will change to indicate that you are connected and ready to download new software or maps.



- 5 If you have already loaded software to your unit on a previous occasion, the Main Menu will be displayed. Plug the USB cable into a USB port on your computer. Plug the other end into the underside of the iCN 630 unit. The display will change to indicate that you are connected and ready to download new software or maps.
- 6 You are now ready to start using the functions available on the iCN Desktop application.
- 7 The drivers for the iCN 630 should automatically be installed during the desktop installation. If that does not happen or you get the following windows display on your PC. Follow the directions below applicable to the operating system on your PC.

Note:

- a Windows XP users see next page.
- b Windows 2000 users see page 12.
- c Windows ME and 98SE users see page 13.

a Windows XP users

Follow these steps to complete installation under Windows XP for each device that Windows prompts you to install. You will see each of these screens twice.



Click Next



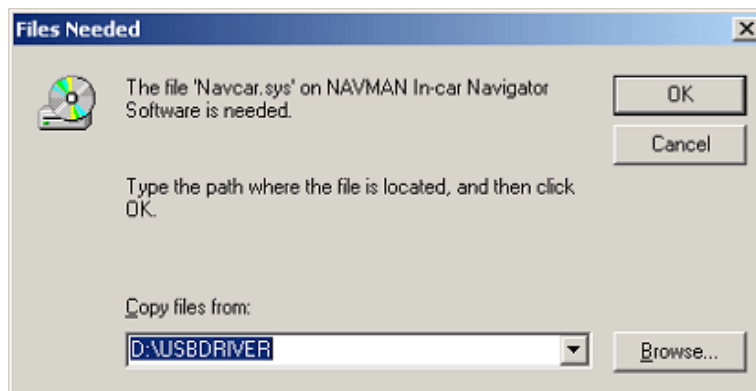
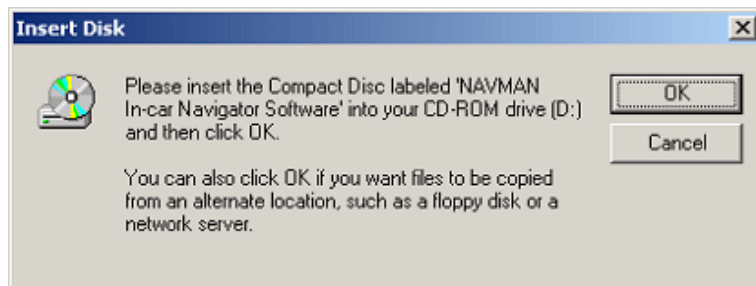
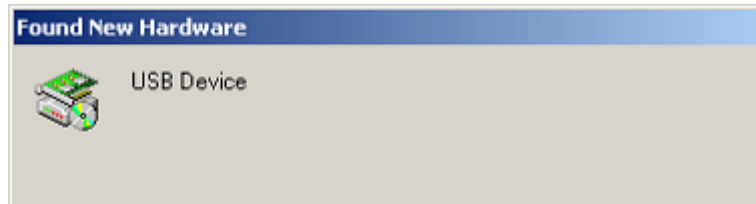
Click continue Anyway



Click Finish

**b Windows 2000 Users**

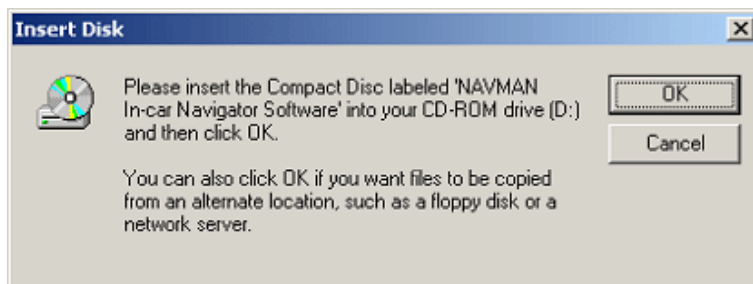
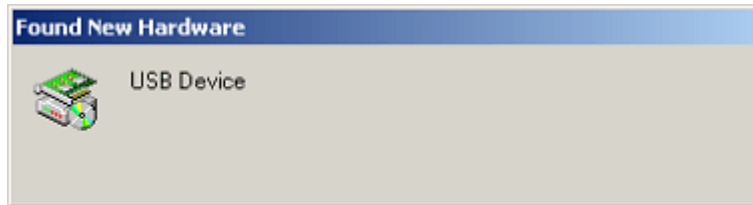
Under Windows 2000, you may see the screen below. Click “Finish” to complete the installation. If you do not see this screen, then the installation has completed automatically.



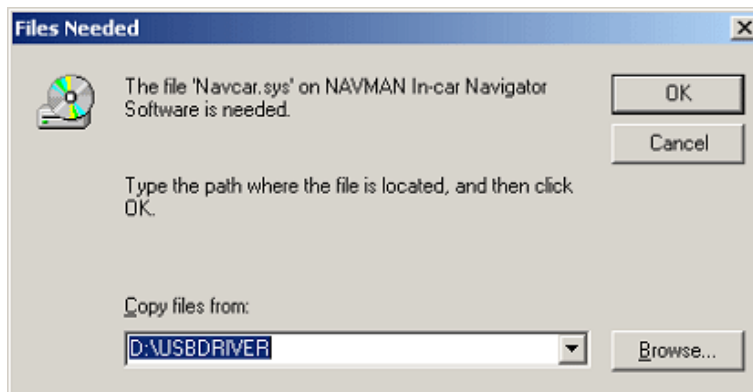
You may now continue to the next section.

c Windows Me and 98SE Users

Under Windows Me and 98SE, you may see the screen below. Select “Browse” and locate the USB Drivers folder on the iCN installer CD and select “OK” If you do not see this screen, then the installation has completed automatically. You may now continue to the next section.



Enter the location of the iCN USB driver disk D:\USBDRIVER.



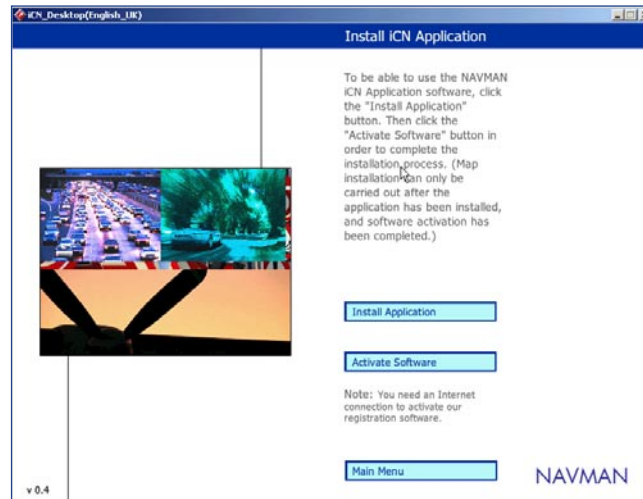
Click OK.



## Step 2: Installing iCN Application

This function allows you to install smartMAP™ software into a brand new iCN 630 unit, or to upgrade existing software to a newer version. Before beginning, make sure the unit is connected to the computer via the USB port – refer to the previous section Connecting the iCN 630 to Your Computer for more information. (Your unit is correctly connected if the display shows a computer and iCN 630 unit connected together).

- 1 Click **iCN Application** from the Main Menu.



Hint: You will lose all of your Settings, Favourites and Shortcuts when you upgrade your software. Use the Backup function to save these settings before upgrading the software. Refer to Backup Device Settings for further information.

You will need to have Microsoft Internet Explorer version 5.5 or above to correctly activate the software.

**WARNING:** you will need the Product Key found on the back of your CD-ROM every time you upgrade your software. Keep this in a safe place.

- 2 This is a two-step process. Firstly you must install the software, then you must register the installation in order to activate the application.
- 3 Click on **Install Application**.
- 4 The installation may take several minutes to complete. Please do not open other applications on your computer during this installation.
- 5 Now you must register your installation so that your software will activate. To do this, you need to have an internet connection. Click on **Activate Software**.
- 6 You will need to enter registration information. Some is optional - be sure to complete all of the "Required" fields. You will be prompted to enter a Product Key which can be found on the CD-ROM case (supplied).
- 7 Once you have completed the software activation, you are now ready to install maps.



### STEP 3: Installing Maps

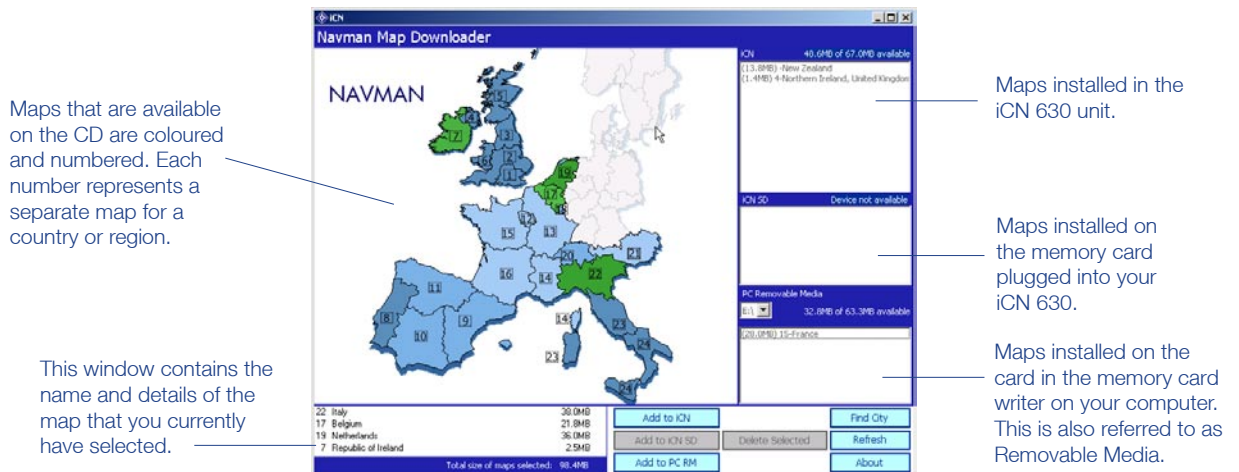
This function allows you to manage the maps that you can use on the iCN 630. Refer to Section 15 Available Maps for a list of maps included on CD-ROM in your country of purchase.

The iCN 630 has 64 Mbytes of internal memory available for storing maps - the unit can store one or many map regions depending on their size. Additional maps can be stored on SD or MMC memory cards. Maps can be changed at any time.

The main options are:

- Review the maps you currently have stored in your iCN 630 unit or memory card.
- Download new maps into your iCN 630 unit.
- Download new maps to a memory card plugged into your iCN 630 unit.
- Download new maps to a memory card using a memory card writer on your PC.
- Remove maps from your iCN 630 unit or memory card.

Before beginning, make sure the unit is connected to the computer via the USB port – refer to the section Connecting the iCN 630 to your computer for more information. (Your unit is correctly connected if the display shows a computer and iCN 630 unit connected together).



You may be supplied with several map CDs. If the map you require is not displayed, simply replace the CD currently in your CD-ROM drive with the other CD.

Drag and drop is a Windows term that describes using the mouse to move items from one place to another. To drag and drop a map, point to the map you require, then press and hold down the left-hand mouse button and drag the map over to one of the right hand windows. Refer to Windows Help for more information.

Multiple map regions can be selected and copied across to the iCN 630 or memory cards. The total map size is displayed as each map is selected

- 1 Click **Install Maps** from the Main Menu.
- 2 To install a new map to the iCN 630 device or to an SD memory card, choose one of the following:
  - Click on the region that you wish to install. The region's name will appear in the bottom left window. To download the map into your unit, click on Add to iCN 630. To download the map to an SD memory card in your unit, click on Add to iCN SD. To download the map to an SD memory card in your SD writer, click on Add to PC RM.
  - Alternatively, drag and drop the region to one of the windows on the right hand side of the screen (iCN 630 or iCN 630 SD).
- 3 To search for a particular city on the map:
  - Click **Find City**.
  - Type in the name of the city or town, or select from the list provided.
  - Double click on your selection to locate the city on the map.

### *Installing Maps on SD or MMC Memory Cards*

Note: When using maps from an SD or MMC card, do not remove the card while navigating or the unit will reset.

If you require additional maps, you can download these to a SD (Secure Digital) or MMC (MultiMediaCard) memory card. Installing maps onto a memory card can be done in one of two ways:

- 1 Plug the memory card into the slot in the top of your iCN 630 unit. Follow the instructions above, using the Add to iCN SD option.



- 2 Alternatively, you may have purchased a memory card writer. Ensure the memory card writer is connected to your PC via a USB port. Insert the memory card into the writer. Follow the instructions above, using the Add to PC RM option. Note: this option is faster.

**Note:** SD and MMC cards must be formatted using FAT16 format. See your PC user guide for more information on how to format SD or MMC card.





## STEP 4: Reading User Manuals and Quick Start Guides

You can read the User Manual and Quick Start Guide on your computer screen by selecting these options from the Main Menu.

The User Manual and Quick Start Guide are available as Acrobat PDF files. If you do not already have Acrobat PDF reader software on your computer, it will be installed automatically from the iCN Desktop CD-ROM when you select the User Manual or Quick Start Guide from the Main Menu.



## Other iCN Desktop Options

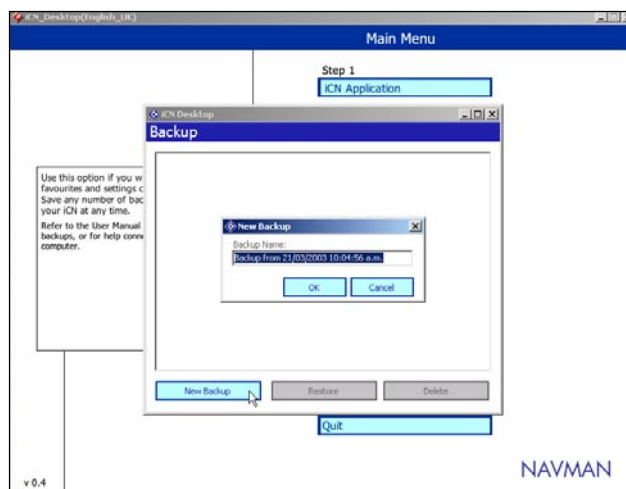
### *Backing Up Device Settings*

This function allows you to back up the Settings, Favourites and Shortcuts that you have programmed into your iCN 630 unit. You can save any number of backups onto your PC, and restore them onto your iCN 630 unit at any time.

You may want to use this function in case you need to have your unit repaired, or perhaps you are travelling and wish to store a new set of Favourites and Shortcuts temporarily.

Before beginning, make sure the unit is connected to the computer via the USB port – refer to the section Connecting the iCN 630 to your Computer for more information. (Your unit is correctly connected if the display shows a computer and iCN 630 unit connected together).

- 1 Click **Backup Device Settings** from the Main Menu.



- 2 To back up the Settings, Shortcuts and Favourites currently stored on your iCN 630 unit:

- Click **New Backup**.
- In the New Backup screen, your backup will be stored as at the current date and time. Rename the backup here if you wish by typing over the default name. Click **OK** to continue the backup.
- Your backup will be stored in your computer under  
C:\Program Files\Navman\iCN 630 Desktop Installer\Backup.

- 3 To restore one of your previously saved backups back to your iCN 630:
  - Click on the backup that you wish to restore from the list provided.
  - Click **Restore**.
- 4 To delete any of your previously saved backups from your computer:
  - Click on the backup that you wish to delete from the list provided.
  - Click **Delete**.

***Visit Navman Website***

Click on this option to visit the NAVMAN website for updates, support and general information.  
Note: you will need an internet connection to use this option.

## 4 INSTALLING THE iCN 630 IN YOUR VEHICLE

Before installing the iCN 630 In-Car navigation unit, check whether your vehicle is fitted with an athermic (heat reflecting) or a heated windshield. If so, you will need to purchase an external or re-radiating antenna to allow your iCN 630 unit to pick up the GPS signals. For more information, refer to Section 14 Accessories.

Your iCN 630 unit comes with mounting options that allow you to install the unit in three different ways:

- By suction straight onto the windshield.
- By suction or an adhesive disc onto the dash.
- By directly screwing onto the dash.

Alternative mounting options may be available specifically for your make and model of vehicle.

Follow these mounting instructions carefully to ensure your unit is properly installed.

For security purposes and to avoid overheating, do not leave this unit on the dash or windscreen while your vehicle is unattended, especially in strong sunlight. Do not use or handle if the unit is hot - leave it to cool out of the sun.

If your unit does get too hot then you will be prompted to turn down the brightness (press and hold the zoom [icon] key). If the unit continues to get hotter the screen will go blank - voice instructions will continue.



### Suction Mount to Windshield

- 1 Choose a position on the windshield where the iCN 630 will be clearly visible by the driver. Follow the safety guidelines at the front of this manual to ensure that the unit does not obstruct the view of the driver, or interfere with the operation of any airbags and safety devices in the vehicle.
- 2 Make sure that both the windshield and the suction cup are thoroughly clean and dry.
- 3 Hold the suction cup firmly against the windshield and press the lever down until it snaps shut.
- 4 The ball foot should now be securely fixed on the windshield.
- 5 Slip the locking nut loosely over the ball foot, with the flat side facing upwards.

To remove the suction cup, pull the lever up. Release the suction using release tab.

Should you experience problems with your suction cup hot holding on, clean an area of your windshield with a cloth dabbed in isopropyl alcohol [tape head cleaner] let it dry, then re-apply the suction cup.



- 6 Snap the socket clip onto the ball foot.



- 7 Adjust the position of the socket clip, so that the unit will be clearly visible by the driver.
- 8 Wind the locking nut onto the thread of the socket clip until firm.



- 9 Snap the iCN 630 unit onto the socket clip. First, position the two locating tabs on the underside of the unit into the corresponding slots on the socket clip. Then snap the upper side of the unit into the clip.
- 10 Flip the aerial outwards so that the aerial is pointing horizontally.

To unclip the iCN 630 unit from the mounting bracket, press down on the back of the upper plastic clip to release the top of the unit, then lift the unit out of the bottom two slots.



In vehicles where auxiliary power is permanently on, the unit can be switched on and programmed as soon as the power adaptor is connected. Switching the engine on will not reset the unit.

- 11 Plug the power cable into the socket on the left hand side of the unit.
- 12 Plug the other end of the power adaptor into the vehicle's cigarette lighter socket.
- 13 Make sure that the unit is positioned such that the aerial has a clear view of the sky.
- 14 In most vehicles, you will need to have the engine idling in order to program your route into the unit. While you can switch on the unit with just the auxiliary power on (i.e. your key in the Auxiliary ON position), turning the key to switch on the engine may interrupt power to the unit and your programmed route will be saved for re use. It is recommended that you program your route with the engine may already idling, but with the automatic shift of your car in 'Park' and the handbrake applied.



## Suction or Adhesive Mount to Dash

To remove the suction cup, pull the lever up. Release the suction using release tab.

- 1 Choose a position on the dash where the iCN 630 will be clearly visible by the driver. Follow the safety guidelines at the front of this manual to ensure that the unit does not obstruct the view of the driver, or interfere with the operation of any airbags and safety devices in the vehicle.
- 2 Make sure that both the dash and the suction cup are thoroughly clean.
- 3 Suction Mount: if the location you have chosen is flat enough, you can simply use the suction cup to mount the unit directly onto the dash.
- 4 Adhesive Mount: If the location you have chosen is not suitable to use the suction cup alone, stick the sucker pad down first to give a flat surface. Do this by removing the protective layer from the adhesive tape on the underside of the sucker pad, and pressing the sucker pad firmly down for 30 seconds in the desired position on the dash.  
NOTE: this is a permanent solution – the adhesive tape and sucker pad cannot be removed from the dash once fixed.
- 5 Hold the suction cup firmly against the dash or centrally on the sucker pad, and press the lever down until it snaps shut.
- 6 The ball foot should now be securely fixed. Slip the locking nut loosely over the ball foot, with the flat side facing upwards.



- 7 Snap the socket clip onto the ball foot.



- 8 Adjust the position of the socket clip, so that the unit will be clearly visible by the driver.
- 9 Wind the locking nut onto the thread of the socket clip until firm.



To unclip the iCN 630 unit from the mounting bracket, press down on the back of the upper plastic clip to release the top of the unit, then lift the unit out of the bottom two slots.

- 10 Snap the iCN 630 unit onto the socket clip. First, position the two locating tabs on the underside of the unit into the corresponding slots on the socket clip. Then snap the upper side of the unit into the clip.
- 11 Flip the aerial outwards so that the aerial is pointing horizontally.

Aerial points up and out



- 12 Plug the power cable into the socket on the left hand side of the unit.
- 13 Plug the other end of the power adaptor into the vehicle's cigarette lighter socket.
- 14 Make sure that the unit is positioned such that the aerial has a clear view of the sky.

In vehicles where auxiliary power is permanently on, the unit can be switched on and programmed as soon as the power adaptor is connected.

Switching the engine on will not reset the unit.



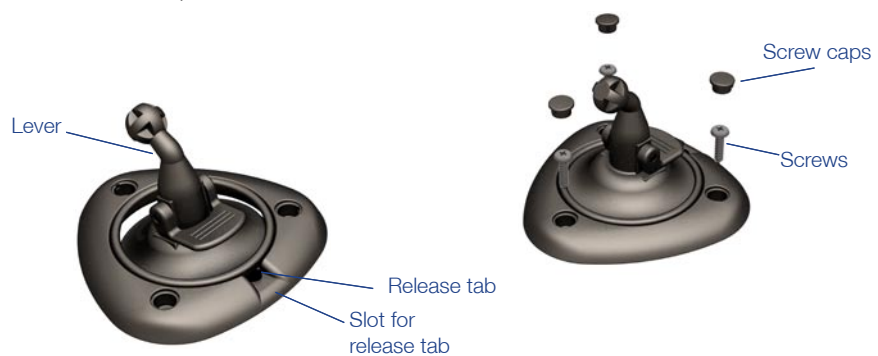
### Screw Mount to Dash

- 1 Choose a position on the dash where the iCN 630 will be clearly visible by the driver. Follow the safety guidelines at the front of this manual to ensure that the unit does not obstruct the view of the driver, or interfere with the operation of any airbags and safety devices in the vehicle.
- 2 Join the ball foot and sucker pad together by positioning the suction cup centrally on the sucker pad, and pressing the lever down until it snaps shut.
- 3 Fit the retainer ring inside the screw plate by sliding the four locating tabs into the corresponding slots on the underside of the screw plate.

Note. Do not use the screw plate without the retainer ring or suction pad.



- 4 Bring the ball foot up through the centre of the screw plate. Position the ball foot correctly by sliding the release tab through the slot on the screw plate.
- 5 Place the assembly into position on the dash. Use the three screws provided to fix the assembly firmly to the dash.
- 6 Press the screw caps over the screw heads.



- 7 The ball foot should now be securely fixed. Slip the locking nut loosely over the ball foot, with the flat side facing upwards.
- 8 Snap the socket clip onto the ball foot.
- 9 Adjust the position of the socket clip, so that the unit will be clearly visible by the driver.
- 10 Wind the locking nut onto the thread of the socket clip until firm.



To unclip the iCN 630 unit from the mounting bracket, press down on the back of the upper plastic clip to release the top of the unit, then lift the unit out of the bottom two slots.

- 11 Snap the iCN 630 unit onto the socket clip. First, position the two locating tabs on the underside of the unit into the corresponding slots on the socket clip. Then snap the upper side of the unit into the clip.
- 12 Flip the aerial outwards so that the aerial is pointing horizontally.



In vehicles where auxiliary power is permanently on, the unit can be switched on and programmed as soon as the power adaptor is connected. Switching the engine on will not reset the unit.

- 13 Plug the power cable into the socket on the left hand side of the unit.
- 14 Plug the other end of the power adaptor into the vehicle's cigarette lighter socket.
- 15 Make sure that the unit is positioned such that the aerial has a clear view of the sky.
- 16 In most vehicles, you will need to have the engine idling in order to program your route into the unit. While you can switch on the unit with just the auxiliary power on (i.e. your key in the Auxiliary ON position), turning the key to switch on the engine may interrupt power to the unit and your programmed route will be saved for re-use. It is recommended that you program your route with the engine already idling but with the automatic shift of your car in 'Park' and the handbrake applied.




# 5 CONTROLS AND KEYBOARD


## Using the Control Buttons

The control buttons on the right-hand side of the iCN 630 unit allow you to navigate through the different screens and enter information. Many of the control buttons have more than one use – these are described in the diagram below.

Most of the time, you will use 4 main buttons – **OK**, **ESC**, **PAGE** and the **8-way Toggle Button**. The **8-way Toggle Button** enables you to move a cursor around the screen – in a similar manner to using the mouse on a computer. Use the **OK** button to confirm or make a selection. The **ESC** button lets you go back to the previous screen, or delete some text you have entered. And finally, the **PAGE** button will allow you to jump from one screen to the next.

Spend some time practising with the control buttons, and it will become easy in no time!




**Zoom/Brightness Button:** 

This button is used for two different reasons:


- 1 - Change the amount of map that is shown. Press + to see close-up and more detail, or – to see more map area.
2. Hold down for 1-2 seconds to adjust the brightness of the screen.

**OK Button:** **OK**

Use this button to select the highlighted menu option, text or command.

**8-way Toggle Button:** 

Use this button to scroll up and down through the menus, and to move around the map when selecting your destination.


**Menu/Power Button:** 

This button is used for two different reasons:


- 1 - Press to return to the main menu at any time.
- 2 - Hold down for 1-2 seconds to turn on or turn off the unit.

**ESC Button:** **ESC**

This button will cancel what you are doing, delete the last text character you typed, or return to the previous screen. A useful feature of this button is that you can delete a whole line by simply holding this button down for longer.

**PAGE Button:** 

Press this button to jump between different map views, or when a list of options is spread across several screens.

**Volume Button:** 

This button is used for two different reasons:

- 1 – Give a short press to hear the very next instruction.
- 2- Hold down for longer to turn the volume of the voice guidance instructions up or down at any time.





## Using the Menus

Many of the screens that you will use contain a menu of options.



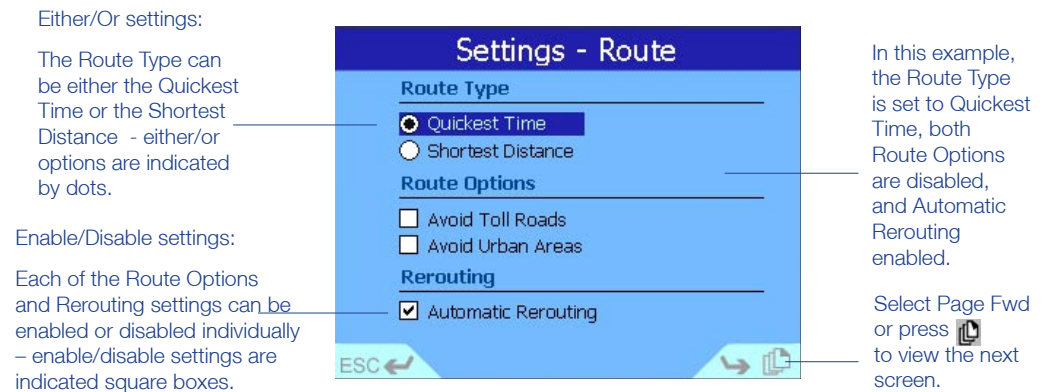
To move around menus:

- 1 Scroll through the menu options using the 8-way toggle button .
- 2 To select a menu option, make sure the option you require is highlighted, then press the **OK** button.
- 3 To exit from a menu screen, scroll down to the on-screen ESC key using the 8-way toggle button , then press the **OK** button. Alternatively, simply press the **ESC** button.



## Moving Around the Settings Screens

The screen below shows an example of one of the screens found in the Settings function.



Either/Or settings:

The Route Type can be either the Quickest Time or the Shortest Distance - either/or options are indicated by dots.

Enable/Disable settings:




Each of the Route Options and Rerouting settings can be enabled or disabled individually - enable/disable settings are indicated square boxes.

In this example, the Route Type is set to Quickest Time, both Route Options are disabled, and Automatic Rerouting enabled.

Select Page Fwd or press  to view the next screen.

To modify Settings:

Note: Any changes that you have made to the Settings are saved once you exit the page (by pressing ESC or selecting the on-screen ESC key).

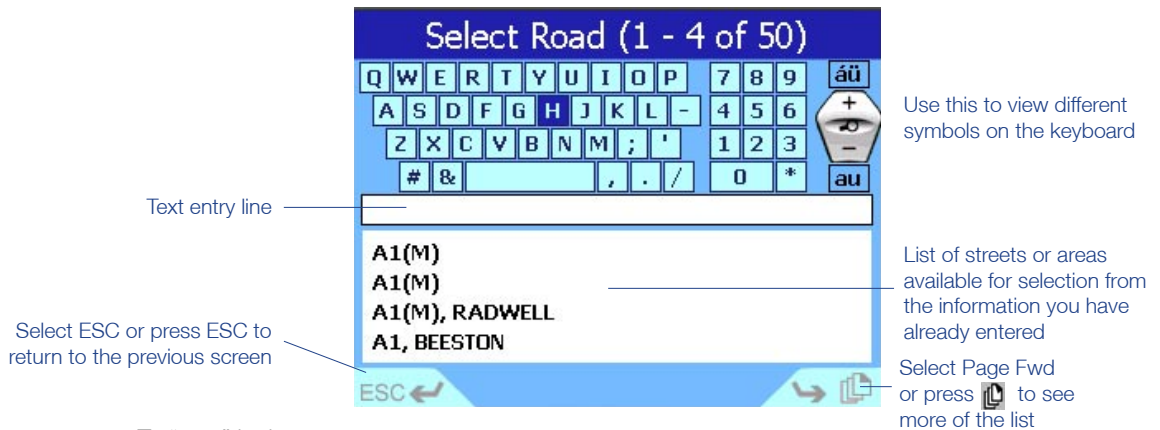
- 1 To modify an either/or setting, scroll to the option you want using the 8-way toggle button , then press **OK**. The dot will disappear from the previous setting and will be displayed next to your chosen option.
- 2 To modify an enable/disable setting, scroll to the option you require using the 8-way toggle button , then press **OK** to display/remove the box.
- 3 Some Settings screens have options that spread across multiple screens. Scroll down to Page Fwd using the 8-way toggle button , then press **OK**.



## Entering Text with the On-screen Keyboard



When entering information about your destination, you will use the controls and an on-screen keyboard. You can enter a street name or area by “typing” in the full name, or “typing”: the beginning of the name then selecting from the list on the lower half of the screen.

Use the up/down toggle button to scroll between the keyboard, the text entry line and the window containing a list of streets or areas.




To “type” in the name:

Hint: As you are entering text, the list of available streets or areas will only contain those that match the information you have already entered (e.g. streets beginning with H in Wellington, New Zealand).

- 1 Move around the keyboard using the 8-way toggle button. Press **OK** to select a letter. The selected letter will appear on the text entry line below the keyboard.
- 2 If you make a mistake, press **ESC** to delete the last letter or hold down the **ESC** key to delete the whole line at once.
- 3 Repeat steps 1 and 2 until finished, or use the 8-way Toggle  to select from the list at any time (press  to see more available streets or areas in the selection list).

To select a name from the list:

- 1 Scroll down to the list of available streets or areas using the up/down toggle button. Press  or select Page Fwd to see more of the list.
- 2 Scroll through the list to find the name. Select a name by pressing **OK**.





## Changing the Brightness and Volume

You are able to modify both the brightness of the display and the volume of the voice guidance instructions to suit the driving conditions.

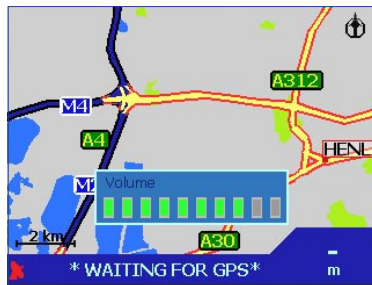
To alter the brightness of the display:





Note: The unit will heat up more quickly when the display brightness is set over 70%. The brightness bar will be coloured red when over 70%. It is advisable that you use a screen brightness below this where possible.

- 1 Hold down the **Zoom/Brightness** button until you see the brightness bar displayed on the screen. This can be done at any time.
- 2 Press  to make the display brighter, or  to dim the display.

To alter the volume of the voice guidance instructions:



When the Volume button is pressed briefly, you will hear the very next instruction. Press for longer to alter the volume.

- 1 Hold down the **Vol** button until you see the volume bar displayed on the screen. This can be done at any time.
- 2 Press  to increase the volume, or  to decrease the volume.

# 6 GETTING STARTED

The iCN 630 is designed to be simple to use, and will direct you to your destination without distracting the driver.

**To ensure your safety, set up your iCN 630 and enter information about your destination BEFORE you start your journey. Do not operate the unit while driving.**

The iCN 630 will then announce upcoming turns and display your directions in a manner that best suits you.



## Powering Up

Tip: skip through the initial screens at any time by pressing the button.

- 1 Press the **MENU/Power** button down for 1 second.
- 2 A short tutorial is available to show you how to use the unit. Use the button to move through the screens. Follow the instructions on the screen. This tutorial can be disabled in the Settings function – for more information, refer to Section 12 Modifying the Settings.
- 3 The Main Menu will then be displayed.



## Main Menu

To turn off the iCN 630, hold the **MENU/Power** button down for 1 second.

The Main Menu provides you with access to all of the setup and viewing modes of the iCN 630.

Navigate through the Main Menu using the **8-way toggle button** , and make your selection by pressing **OK**. You can return to the Main Menu at any time by pressing **MENU/Power** . The **ESC** button will exit you from what you are doing, and return you to the previous screen.



It may take a few minutes to obtain an initial position fix, but will subsequently be much quicker.

Follow the instructions in this manual to set your destination, choose how you want your route displayed, and set up your iCN 630 to suit your needs.

Remember, set up your destination BEFORE you start your journey.



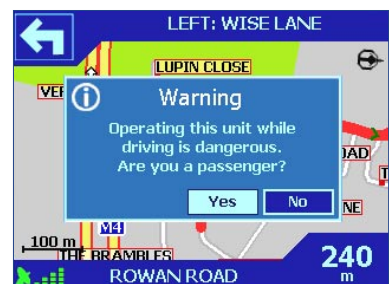
## Driver Protection

Note: this can be disabled in the Settings function – for more information, refer to Section 12 Modifying the Settings.

This unit must not be operated by the driver while the vehicle is moving. If any button is pressed while the vehicle is moving, the Driver Protection screen is displayed. Passengers may continue to use the device.

Remember - the user of this product is solely responsible for observing safe driving practices.

Do not operate your iCN 630 while driving. Park the vehicle first.



**Navman NZ Limited disclaim all liability for any use of this product in a way that may cause accidents, damage or that may violate the law.**



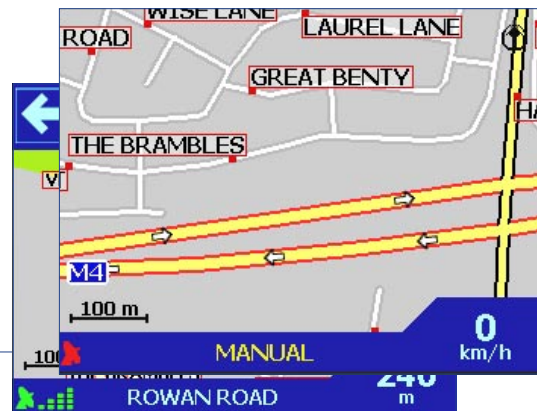
## Getting a GPS Fix

The iCN 630 unit receives GPS signals through the aerial on the back of your unit. In order for the aerial to receive signals, ensure that:

- 1 The unit is outside or in a vehicle parked outside – sunlight alone is not sufficient (e.g. through the window of a building).
- 2 The aerial is pointing horizontally out through your windshield, and has a clear view of the sky.

When you first power on your unit and program a route, it may take several minutes for the unit to get its first GPS fix. You can minimize the amount of time that this takes by remaining stationary in your vehicle until the unit has a fix.

GPS strength indicator is red when the unit has no GPS fix, and green with signal strength indicators when a GPS fix is available.



You will know when the unit has got a GPS fix by the symbols on your map screen. When the unit has no fix, the GPS strength indicator in the bottom left-hand corner of the screen will be coloured red and the words “Waiting for GPS” will be displayed. Also, while the unit is attempting to get a fix, you will notice that there are no route instructions displayed on the map screen.

Once the unit has a valid fix, the GPS strength indicator will turn green and you are ready to program in your destination.

# 7 SETTING YOUR DESTINATION

Before you travel, you must first select a destination and allow the iCN 630 to plan your route. There are three main ways that you can program your destination:

- Use SHORTCUTS that you have previously programmed for destinations used on a regular basis.
- Set a new DESTINATION by:
  - entering a specific street address
  - selecting the intersection of two streets
  - choosing a Point of Interest such as a hotel, school or hospital
  - using a Favourite destination that you have stored in the unit already
  - picking an address you have recently travelled to.
- Take a position STRAIGHT FROM THE MAP and program this as your destination.



## Using a Shortcut

You are able to save your 8 most frequently used destinations as Shortcuts. This is the quickest and easiest way to set your route.

For information on setting new Shortcuts, refer to Section 9 Programming Shortcuts.



- 1 From the Main Menu, select SHORTCUTS.
- 2 Select your previously programmed destination from the Shortcut list. Refer to Section 9 Programming Shortcuts for more information.
- 3 The iCN 630 will calculate the route from your current position, and take you straight to the map display.

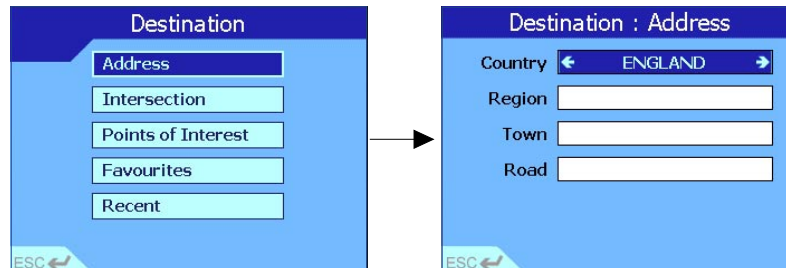


## Setting a New Destination

Heading to an address

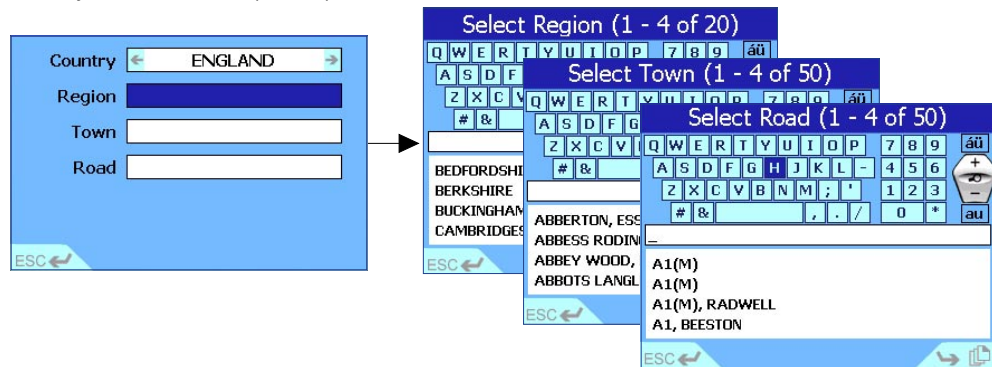
Note: the iCN 630 will automatically display all countries contained in the maps currently loaded in its own memory or on an attached memory card. If there is only one country map loaded, this will be the only option provided.

Use the Destination option from the Main Menu to enter a street address as your destination. Refer to Section 6 Controls and Keyboard help you enter the address details.



Hint: Steps 2 and 3 are optional, but can be useful if your map area is large.

- 1 From the Main Menu, select DESTINATION, then ADDRESS.
- 2 Select COUNTRY in the Destination : Address screen. Use the left/right toggle button to cycle around the options provided.



Refer to Section 6 Controls and Keyboard for more information on using the on-screen keyboard.

- 3 Select REGION. This could be any region such as a city, state or county. To enter a region, choose one of the following:
  - In the text entry screen, type in a region. Once you have finished, position the cursor on the text entry line, and press **OK** to confirm your selection.
  - Alternatively use the up/down toggle button to choose from the list provided, then press **OK** to confirm your selection.
- 4 Select TOWN. As above, type in a town or choose from the list provided.
- 5 Select ROAD. A list of streets in your chosen town is displayed. Type in or choose your street names from the list provided.
- 6 Once the unit has enough information, the details are displayed.



If you wish to alter the address you have entered, simply press ESC or select ESC to re-enter information.

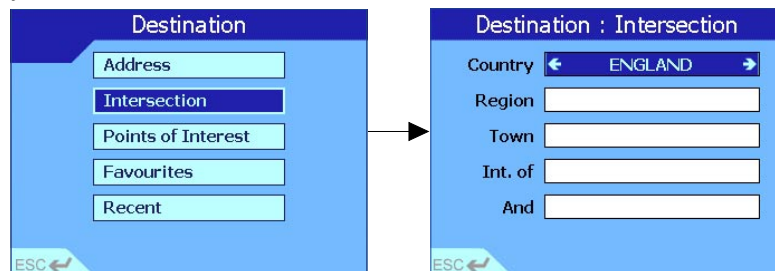
- 7 Choose one of the following:
  - Select **GO**. The unit will calculate the route and display the address on the navigation screens.



- Select SHOW. The unit will not calculate the route, but will simply display the address using the Map Browser mode. From here you can select this address as your destination or move around the map to find a different destination. Refer to Section 7 Setting Your Destination – Straight From the Map for more information.
- Select SAVE. This will allow you to save the destination as a Shortcut or Favourite. Refer to Section 9/10 Programming Shortcuts/Favourites for more information.

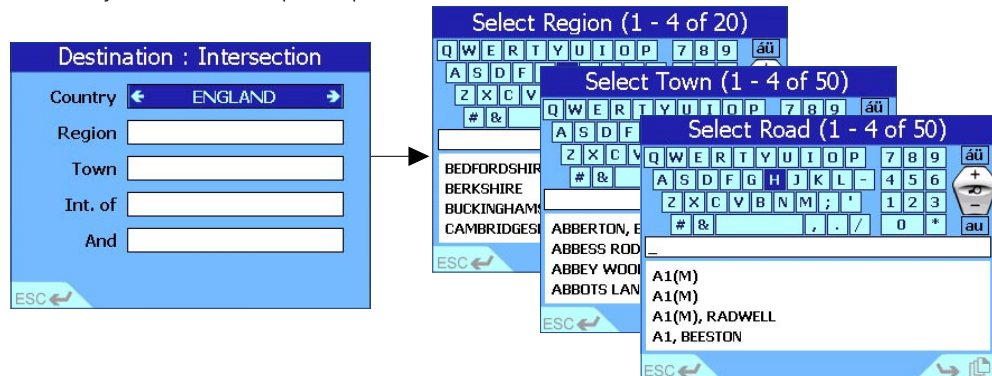
#### Heading to an intersection

Use the Destination option from the Main Menu to enter the intersection of two streets as your destination.



- 1 From the Main Menu, select DESTINATION, then INTERSECTION.
- 2 Select COUNTRY in the Destination : Intersection screen. Use the left/right toggle button to cycle around the options provided.

Hint: Steps 2 and 3 are optional, but can be useful if your map area is large or the street is not uniquely named.



- 3 Select REGION. This could be any geographical region such as a city, state or county. To enter a region, choose one of the following:
  - In the text entry screen, type in a region. Once you have finished, position the cursor on the text entry line, and press **OK** to confirm your selection.
  - Alternatively use the up/down toggle button to choose from the list provided, then press **OK** to confirm your selection.
- 4 Select TOWN. As above, type in a town or choose from the list provided.
- 5 Select INT. OF. A list of streets in your chosen town is displayed. Type in or choose one of your street names from the list provided.
- 6 Select AND. A list of streets that intersect with the first street is displayed. Type in or choose the intersecting street name from the list provided.
- 7 Once the unit has enough information, the details are displayed.

Refer to Section 6 Controls and Keyboard for more information on using the on-screen keyboard.



Note: if you power down before selecting GO or SAVE, your address information will be lost.

8 Choose one of the following:

- Select GO. The unit will calculate the route and display the intersection on the navigation screen.
- Select SHOW. The unit will not calculate the route, but will simply display the address using the Map Browser mode. From here you can select this address as your destination or move around the map to find a different destination. Refer to Section 7 Setting Your Destination – Straight From the Map for more information.
- Select SAVE. This will allow you to save the destination as a Shortcut or Favourite. Refer to Section 9/10 Programming Shortcuts/Favourites for more information.

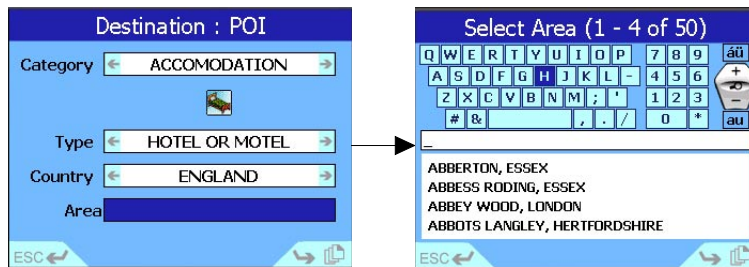
#### Heading to a point of interest

The map information that you are using also has a wide number of “Points of Interest” stored for your convenience. A Point of Interest is any named site, feature, landmark or public venue. There can be thousands of Points of Interest in larger cities, so they are sorted into categories. Points of Interest categories may be hotels, churches, schools or parks to name just a few.



Example: if you wish to locate a hotel in a particular area, use this function by selecting CATEGORY – accommodation, TYPE – hotel. Enter the area of interest, and select from the list of hotels provided.

- 1 From the Main Menu, select DESTINATION, then POINTS OF INTEREST.
- 2 Select CATEGORY in the Destination : POI screen. Use the left/right toggle button to cycle around the options provided.
- 3 Select TYPE. This will narrow down the number of options available. Use the left/right toggle button to cycle around the options.
- 4 Select COUNTRY. Use the left/right toggle button to cycle around the options.



5 Select AREA. To enter an area, choose one of the following:

- In the text entry screen, type in an area of interest. Once you have finished, position the cursor on the text entry line, and press **OK** to confirm your selection.
- Alternatively use the up/down toggle button to choose from the list provided, then press **OK** to confirm your selection.



6 Once you have entered all the information in the Destination : POI screen, press **OK**.

7 Press **OK** to select a POI from the list provided in the Select POI text entry screen.

8 Once the unit has enough information, the details are displayed.

Screens such as Select POI may have more than one page to view. In this example, the screen displays the first 4 POIs of a total 9 (1-4 of 9).

Press **Page Fwd** or select Page Fwd to view the next 5 POIs on the list.



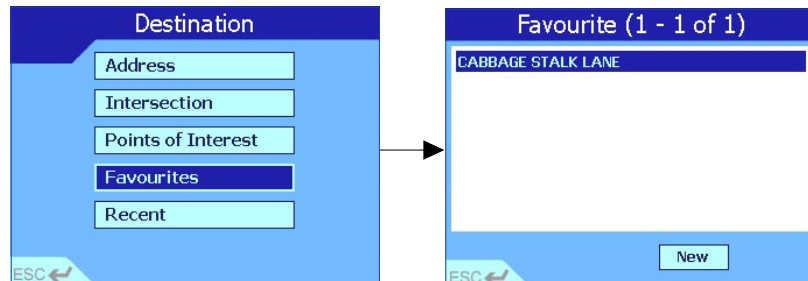
9 Choose one of the following:

- Select **GO**. The unit will calculate the route and display the POI on the navigation screen.
- Select **SHOW**. The unit will not calculate the route, but will simply display the address using the Map Browser mode. From here you can select this address as your destination or move around the map to find a different destination. Refer to Section 7 Setting Your Destination – Straight From the Map for more information.
- Select **SAVE**. This will allow you to save the destination as a Shortcut or Favourite. Refer to Section 9/10 Programming Shortcuts/Favourites for more information.



## Using a Saved Favourite

The iCN 630 unit allows you to store up to 100 Favourite destinations, to save you from re-entering the location again. Use Shortcuts for your 8 most regular locations, and store other commonly used locations as Favourites.



Add a new Favourite through the DESTINATION – FAVOURITES menu. Refer to Section 10 Programming Favourites for more information.

- 1 From the Main Menu, select DESTINATION, then FAVOURITES.
- 2 Select your destination from the Favourite list.



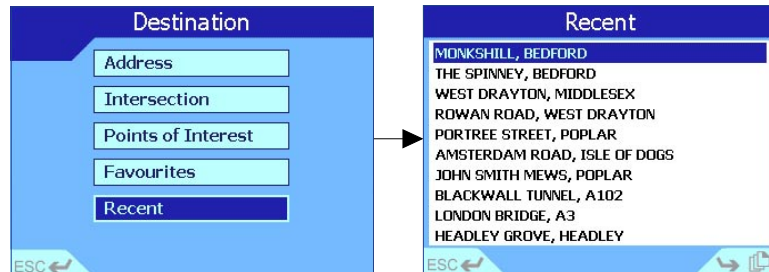
- 3 You are taken to the Edit Favourite screen, where your destination is displayed, and you are able to change details such as the name or type of Favourite that you have assigned. Refer to Section 10 Programming Favourites – Editing or Deleting a Saved Favourite for more information.
- 4 Choose one of the following:
  - Select GO. The unit will calculate the route and display the destination on the navigation screen. Changes you have made while in the Edit Favourite screen will automatically be saved.
  - Select SHOW. The unit will not calculate the route, but will simply display the address using the Map Browser mode. From here you can select this address as your destination or move around the map to find a different destination. Refer to Section 7 Setting Your Destination – Straight From the Map for more information.
  - Select DELETE. This will delete your saved Favourite, and return you to the Favourite list.
  - Select SAVE. This will save any changes you have made while in the Edit Favourite screen, and return you to the Favourite list.




## Heading to a Recently Used Address

Destinations and departure points that you have recently used are stored inside the iCN 630 unit so that you can quickly recall them.

The iCN 630 saves the last 30 locations that you have travelled to.



- 1 From the Main Menu, select DESTINATION, then RECENT.
- 2 Select your destination from the list of recent addresses. Press  or select Page Fwd to see more of the list.
- 3 The details of your chosen destination are displayed.



- 4 Choose one of the following:
  - Select GO. The unit will calculate the route and display the destination on the navigation screen.
  - Select SHOW. The unit will not calculate the route, but will simply display the address using the Map Browser mode. From here you can select this address as your destination or move around the map to find a different destination. Refer to Section 7 Setting Your Destination – Straight From the Map for more information.
  - Select SAVE. This will allow you to save the destination as a Shortcut or Favourite. Refer to Section 9/10 Programming Shortcuts/Favourites for more information.






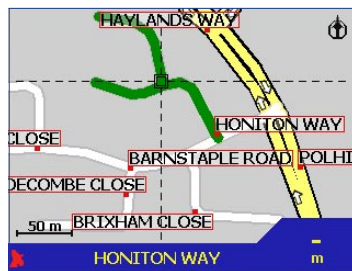
## Straight from the Map

You may find it easier to program your destination directly from the map. Generally you will use this option if you know the area in which your destination is, or if you have selected SHOW from a previous entry screen. The iCN 630 will allow you to scroll around a map and pick a point on the map. The unit will automatically load the address details for you, and away you go.




As you navigate close to the edge of the map, the map will move to show more area.

- 1 From the Main Menu, select MAP. You are now in the automatic Map Browser screen.
- 2 Navigate around the map using the **8-way toggle button** .
- 3 Zoom in and out as required using  + and .
- 4 Press **OK** to display gridlines – you are now in the manual Map Browser screen.



Press ESC at any time to remove the gridlines, and again to return to the automatic Map Browser screen.

- 5 Use the **8-way toggle button**  to position the intersection of the gridlines over the destination that you require. When the gridlines are over a street, the street name is shown along the bottom of the screen.
- 6 Press **OK** to select a point as your destination. The address details are automatically displayed.




Note: the START option will only be available if the unit does not have a current GPS fix.

- 7 Choose one of the following:
  - Select GO. The unit will calculate the route and display the destination on the navigation screen.
  - Select START. This sets your chosen location as your departure point (normally your departure point is assumed to be your present location). Refer to the following section Without a GPS Position Fix for more information.
  - Select SAVE. This will allow you to save the destination as a Shortcut or Favourite. Refer to Section 9/10 Programming Shortcuts/Favourites for more information.

## 8 VIEWING YOUR ROUTE

All of map views are accompanied by audible announcements of your next turn.

There are four different ways that you can view instructions along your way. Cycle through the four navigation screens by simply pressing .




- The MAP BROWSER screen displays your route on a map which is always oriented North.
- The NAVIGATION MAP screen displays your route on map which is always oriented in the direction in which you are travelling.
- The NEXT INSTRUCTION screen is a simple graphical display showing the direction and distance to your next turn.
- The NEXT 4 INSTRUCTIONS screen displays a list of your next 4 turns, with the street name, direction of turn and distance to go.

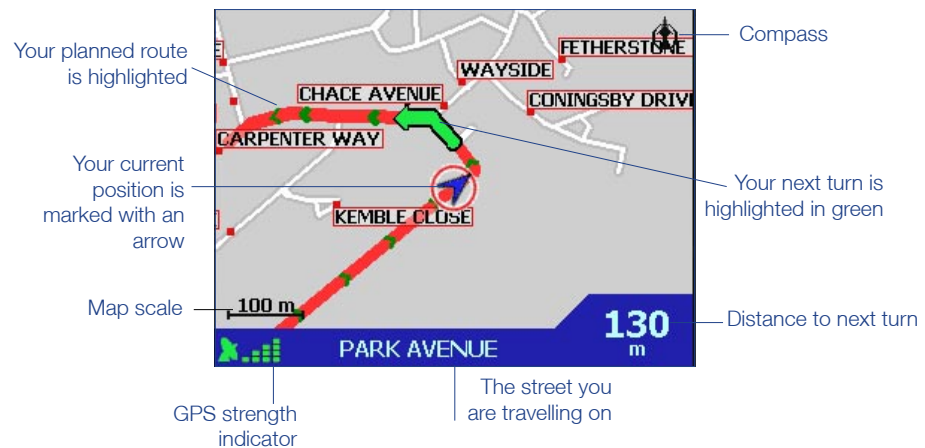
Note: These are the only four screens available for the driver to view while travelling. The Driver Protection message will be displayed if you attempt to use any of the other functions in this manual while driving. Refer to Section 6 Getting Started – Driver Protection for more information.



### Map Browser

This view is always oriented to the North, and shows your current position and surrounding street names. If you have already programmed a route, the route and all turns are highlighted.

- 1 From the Main Menu, select MAP.
- 2 Zoom in and out as required using + and .
- 3 You can cancel your current route at any time. Return to the Main Menu by pressing **MENU/Power**  and select CANCEL ROUTE.







Note: You can use the Map Browser screen to set your destination. Refer to Section 7 Setting Your Destination – Straight From the Map for more information.

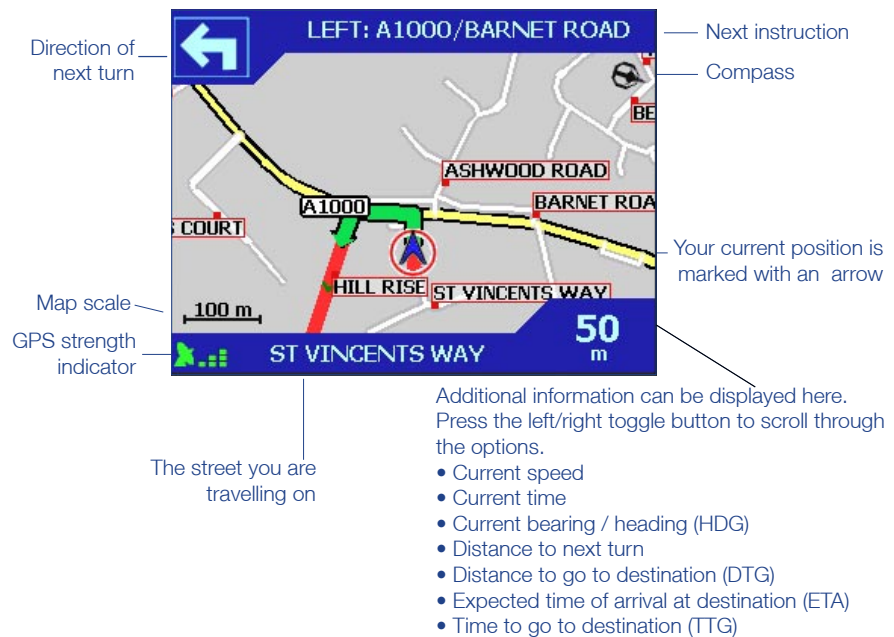


## Navigation Map

Note: if you power the unit off or switch off your engine while viewing your route, the unit will automatically return to this view when you restart.

Similar to the Map Browser view, except that the map is always oriented to the direction in which your vehicle is travelling. This is often an easier way to keep your bearings.

- 1 From the Main Menu, select MAP.
- 2 Change to the Navigation Map by pressing .
- 3 Zoom in and out as required using  + and .
- 4 You can cancel your current route at any time. Return to the Main Menu by pressing **MENU/Power**  and select CANCEL ROUTE.




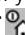





### Next Instruction

This view clearly shows the information that you need for the next turn – the direction of the turn and the distance to the turn.

Note: the unit must have planned a route before you can use this view. Refer to Section 7 Setting Your Destination to calculate a route.

- 1 From the Main Menu, select MAP.
- 2 Press  repeatedly until you see this screen.
- 3 You can cancel your current route at any time. Return to the Main Menu by pressing **MENU/Power**  and select CANCEL ROUTE.



Labels in the screenshot:

- Next instruction: LEFT: CARPENTER WAY
- Direction of next turn: (Left arrow icon)
- Distance to next turn: 800 m
- GPS strength indicator: (Signal strength bars)
- The street you are travelling on: HILL RISE
- Distance to destination: 1.0 km



Additional information can be displayed here. Press the left/right toggle button to scroll through the options.

- Current speed
- Current time
- Current bearing / heading (HDG)
- Distance to next turn
- Distance to go to destination (DTG)
- Expected time of arrival at destination (ETA)
- Time to go to destination (TTG)



### Next 4 Instructions

The most simple of views, the next four turns are described by the direction of the turn, the next street name and the distance to the turn. The very next turn is highlighted, and is always at the top of the list. Your current street name is displayed along the bottom of the screen. As with the Next Instruction screen, the iCN 630 must have planned a route before you can use this screen. Refer to Programming a Destination to calculate a route.

- 1 From the Main Menu, select MAP.
- 2 Press  repeatedly until you see this screen.
- 3 You can cancel your current route at any time. Return to the Main Menu by pressing **MENU/Power**  and select CANCEL ROUTE.



### Back-on-Track™ Feature


This function can be disabled in the **SETTINGS** menu.

The iCN 630 is designed to re-plan your route automatically if you take a wrong turn. A ? symbol will appear in the top left-hand corner of the map screens when the unit is busy recalculating the route.



### Automatic Restart Feature

The automatic restart facility is useful if, for example, you stop the vehicle to refuel.

- 1 If you power down while travelling to a destination (i.e. when a route has been calculated), the unit will automatically return to your chosen map screen when you restart. The route will be recalculated from your current position.
- 2 If you power down while you are in the process of changing Settings, the changes you have made will be lost.
- 3 If you power down while entering a destination address (before the unit has calculated the route), the information you have entered will be lost.
- 4 If you do not wish to continue using the programmed route when you restart the unit, return to the Main Menu by pressing the **MENU/Power**  button. You will notice that an additional option is available in the Main Menu called CANCEL ROUTE. Select CANCEL ROUTE.
- 5 Do not remove an SD or MMC memory card while navigating or the unit may reset. Remove memory cards from the unit only when no route is set.

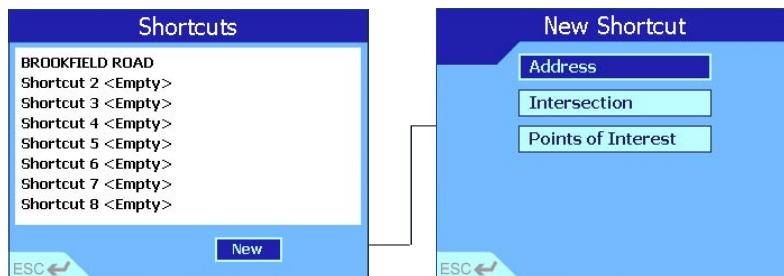
# 9 PROGRAMMING SHORTCUTS

Eight of your most frequently used destinations can be stored in the unit to save you time. Once saved, your Shortcuts can be accessed quickly through the Shortcuts menu with the minimum of key presses, and without having to re-enter any information.



## Adding a New Shortcut

You can also add a new Shortcut through the DESTINATION - FAVOURITES menu.

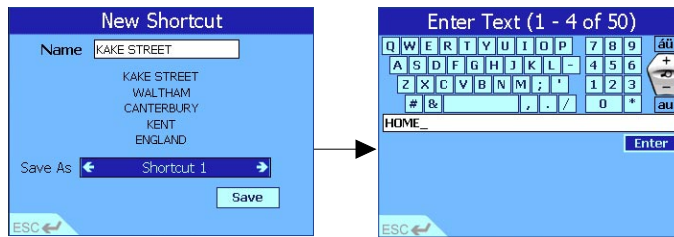


- 1 From the Main Menu, select SHORTCUTS.
- 2 Choose one of the following:
  - Select NEW.
  - Alternatively, select one of the “empty” Shortcuts.
- 3 Select one of the options from the New Shortcut list:
  - ADDRESS – follow the instructions in Section 7 Setting Your Destination - Heading to an Address.
  - INTERSECTION – follow the instructions in Section 7 Setting Your Destination - Heading to an Intersection.
  - POINTS OF INTEREST – follow the instructions from Section 7 Setting Your Destination - Heading to a Point of Interest.
  - CURRENT LOCATION – iCN 630 will automatically store the location of your current position as a new Shortcut (you must have a GPS fix to use this option).

To save an Address, Intersection or Point of Interest, choose the SAVE option once you have entered the destination details.



- 4 You can customize the look of each of your Shortcuts by giving the destination a “nickname” (e.g. HOME).



Example: you may want to save your own address as a Shortcut, and name it HOME.

- 5 To name your Shortcut:
  - Scroll to the NAME box and press **OK**;
  - In the text entry screen, scroll to the text entry line and hold down the ESC button to delete the line of text already printed;
  - Type in the name you require;
  - Select ENTER to save the name.



Note: if you power off the unit before selecting **SAVE**, the details you have just entered will be lost.

- 6 Scroll down to the **SAVE AS** options. Cycle through the available options by pressing the left/right toggle button. Choose one of the following:
  - Save your destination as a Shortcut or a normal Favourite.
  - Select **SAVE**.
- 7 If you attempt to save your new Shortcut over the top of an existing Shortcut, a warning screen is displayed. Choose one of the following:
  - Select **YES** to continue and your new Shortcut will replace the existing one.
  - Alternatively, select **NO** to return to the New Shortcut screen and change the place you wish to save your new Shortcut.
- 8 You are returned to the Shortcut screen, which now shows your new destination in the list. Continue adding more Shortcuts, or select a destination from the list.



### Deleting a Shortcut

Hint: you may want to backup your Shortcuts before deleting them, in case you wish to use them at a later time.

To delete all Shortcuts, use the Clear Shortcuts option in the User Settings screen. For more information, refer to Section 12 Modifying the Settings – User Settings.

Alternatively, you can simply save a new destination over the top of an existing Shortcut. Do this by following the procedure defined in the section above – Adding a New Shortcut.



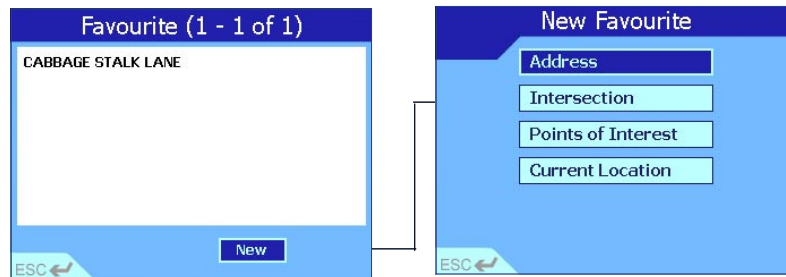
After you have entered the details, use the **SAVE AS** box to save over an existing Shortcut. A warning screen (as shown above) will be displayed – select **NO** to continue.

# 10 PROGRAMMING FAVOURITES

Apart from the eight Shortcuts that you can store, you can also save up to 300 Favourites, which can be accessed through the Destination : Favourites menu.



## Adding a New Favourite

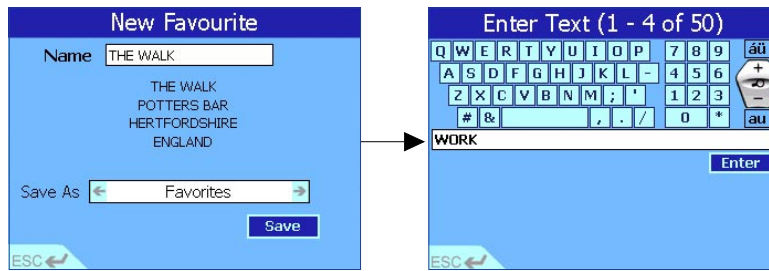


- 1 From the Main Menu, select DESTINATION, then FAVOURITES.
- 2 Select NEW.
- 3 Select one of the options from the New Favourite list:
  - ADDRESS – follow the instructions in Section 7 Setting Your Destination - Heading to an Address.
  - INTERSECTION – follow the instructions in Section 7 Setting Your Destination - Heading to an Intersection.
  - POINTS OF INTEREST – follow the instructions from Section 7 Setting Your Destination - Heading to a Point of Interest.
  - CURRENT LOCATION – iCN 630 will automatically store the location of your current position as a new Favourite (you must have a GPS fix to use this option).

To save an Address, Intersection or Point of Interest, choose the SAVE option once you have entered the destination details.

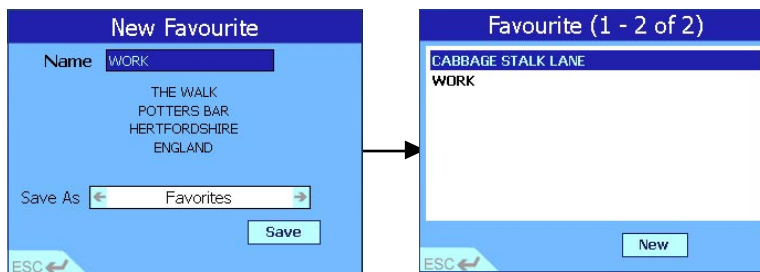


- 4 You can customize the look of each of your Favourites by giving the destination a “nickname” (e.g. HOME). You can also choose to save the Favourite as one of eight Shortcut destinations, which means that you can access it very quickly through the Shortcuts menu.



Example: you may want to save your own address as a Favourite, and name it HOME.

- Scroll to the NAME box and press **OK**.
- In the text entry screen, scroll to the text entry line and hold down the **ESC** button to delete the line of text already printed.
- Type in the name you require.
- Select **ENTER** to save the name.



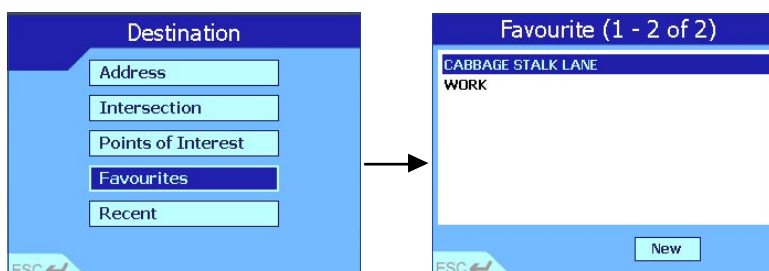
- 6 Scroll down to the **SAVE AS** options. Cycle through the available options by pressing the left/right toggle button. Choose one of the following:
  - Save your destination as a Shortcut or a normal Favourite.
  - Select **SAVE**.
- 7 You are returned to the Favourite screen, which now shows your new destination in the list. Continue adding more Favourites, or select a destination from the list.



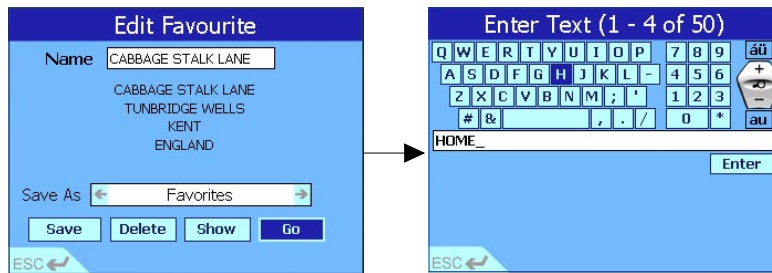
### Editing or Deleting a Saved Favourite

You may wish to delete a Favourite, change the name of the Favourite that you have saved, or perhaps make it one of your Shortcuts.

Hint: you may want to backup your Favourites before deleting them, in case you wish to use them at a later time.



- 1 From the Main Menu, select **DESTINATION**, then **FAVOURITES**.
- 2 Select the Favourite destination that you wish to edit or delete.



3 To change the name your Favourite:

Delete any characters that you don't want by using the ESC key.

- Scroll to the NAME box and press **OK**.
- In the text entry screen, scroll to the text entry line and hold down the **ESC** button to delete the line of text already printed.
- Type in the name you require.
- Select ENTER to save the name.



4 To change the type of Favourite:

- Scroll down to the SAVE AS options.
- Cycle through the available options by pressing the left/right toggle button.


5 Choose one of the following:

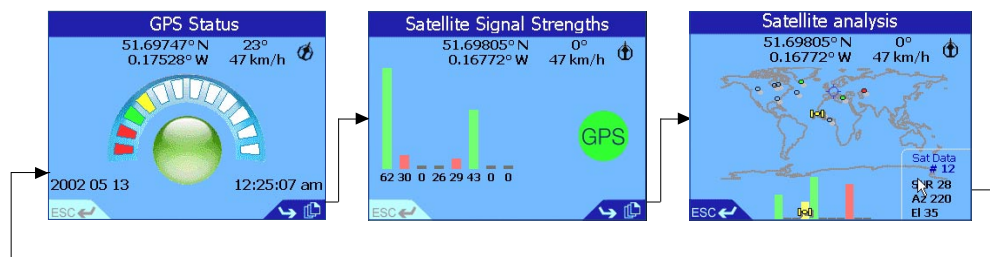
- Select GO. The unit will calculate the route and display the destination on the navigation screens.
- Select SHOW. The unit will not calculate the route, but will simply display the address using the Map Browser mode. From here you can select this address as your destination or move around the map to find a different destination. Refer to Section 7 Setting Your Destination – Straight From the Map for more information.
- Select DELETE. This will delete your saved Favourite, and return you to the Favourite list.
- Select SAVE. You are returned to the Favourite list, where your edited Favourite will appear.

# 11 USING THE GPS STATUS INFORMATION

Hint: If you are having trouble getting a GPS fix, you can use these screens to check out the problem.

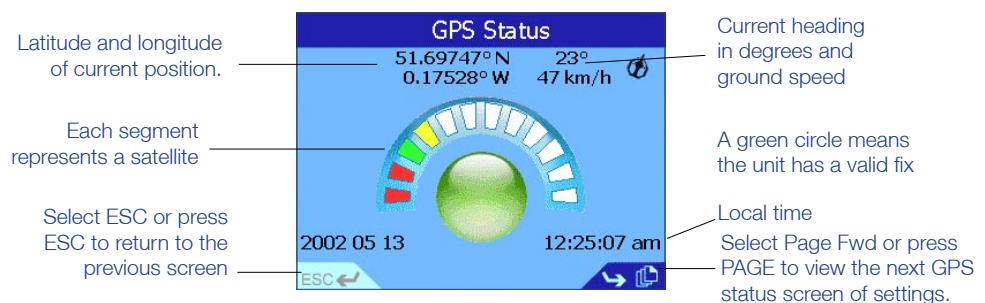
The GPS status screens tell you how well you can receive the GPS satellite information. There are three different screen displays available to you. To view the screens:

- 1 From the Main Menu, select GPS STATUS.
- 2 Press  or select Page Fwd to display the next screen.



## GPS Reception

The ICN 630 relies on the reception of signals transmitted by the Global Positioning System satellites orbiting the earth. This display shows a visual representation of how many satellites the iCN 630 unit is receiving information from.



Latitude and longitude are displayed along with a North-pointing compass, the heading in degrees and ground speed. You can view the Latitude/Longitude values either in degrees, minutes and seconds, or in decimal. Refer to Section 12 Modifying the Settings – GPS Settings for more information.

The 12 satellites that could be viewed from your current position are shown as segments. The satellites are represented as follows:

- A yellow segment indicates a satellite that is being tracked but is not being used to determine your position.
- A red segment indicates a satellite that is being used to determine a two dimensional (2D) fix.
- A green segment indicates a satellite that is used to determine your position.

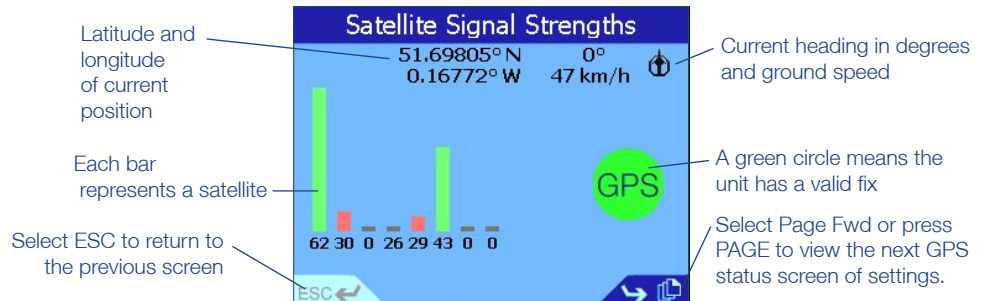
The circle underneath the segment display is green when there is a valid fix (2D or 3D), and red when there is no fix available. While a 2D fix is sufficient to maintain a valid fix, a 3D fix is more accurate.





### Satellite Signal Strengths

Satellite signal strengths are displayed in the form of a bar graph. Colours are used to indicate the status of each satellite.



The circle on the right-hand side of the screen is coloured green when there is a valid fix (2D or 3D), and red when there is no fix available. The 12 satellites that could be viewed from your current position are shown as bars. The satellites are represented as follows:

**Grey Bar** - No signal from satellite

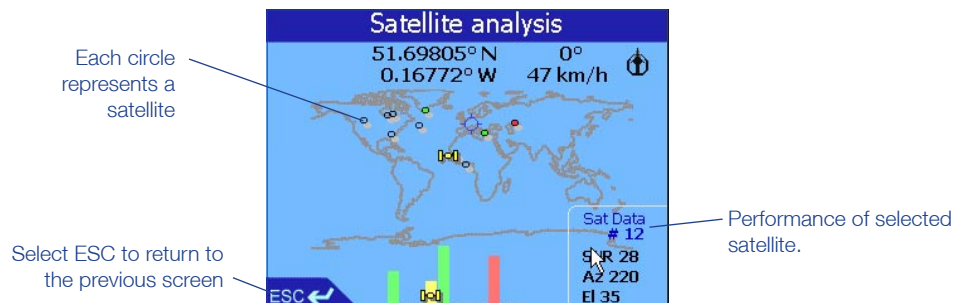
**Red Bar** - Signal being received from the satellite but not used in fixing your position

**Green Bar** - Good signal being received and satellite being used to fix your position.



### Satellite Positions

This screen shows you the position of each satellite in relation to the earth. You can check on the status and performance of an individual satellite by selecting that satellite using the left/right toggle button. The performance of the selected satellite is displayed as shown below.



Again, the satellites are displayed in different colours to represent the status of each.

**Clear circle** - No signal from satellite

**Red circle** - Signal being received from the satellite but not used in fixing your position

**Green circle** - Good signal being received and satellite being used to fix your position

**Yellow satellite icon** - This indicated the satellite whose information is being displayed

# 12 MODIFYING THE SETTINGS

Your unit is already preprogrammed with default settings – it is not necessary to change the settings if you are happy with the default setup.

The unit has a number of Settings that you can alter. You can:

- Change the colours and brightness of the DISPLAY to suit the driving conditions or your own preferences.
- Use the ROUTE & GUIDANCE screen to instruct the unit to find the shortest distance or fastest time, to avoid certain road conditions or to change voice settings.
- Select the POINTS OF INTEREST that are relevant to you.
- Change the format of certain settings in the GPS Status screens.
- Use the USER screen to clear your Favourites, Shortcuts or recent destinations from the unit's memory.



## Display Settings

If you find that the display is difficult to see in certain light conditions, use this function to change the brightness and colour scheme.

Your unit is already preprogrammed with default settings – it is not necessary to change the settings if you are happy with the default setup.



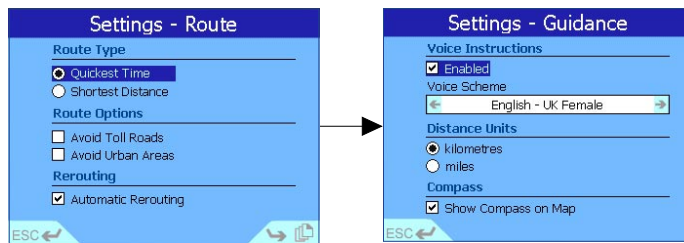
- 1 From the Main Menu, select SETTINGS, then DISPLAY.
- 2 Modify the Settings as required:
  - Select either Day or Night from the Map Colours menu to improve the contrast in light and dark conditions.
  - Select your preferred Map Colour by cycling through the options using the left/right toggle button.




## Route and Guidance Settings

There are a number of options here that affect the way that the unit plans your route. You may be conscious of time and therefore wish to get to your destination by the fastest route possible, or you may be conscious of mileage and wish to take the shortest route. Use this function to change the route settings to suit your needs.

- 1 From the Main Menu, select SETTINGS, then ROUTE & GUIDANCE.



Toggle between the Route settings screen and the Guidance settings screen by selecting Page Fwd or by pressing .

- 2 Use the Route setting screen to:
  - Select either Quickest Time or Shortest Distance from the Route Type menu.
  - Enable or disable Avoid Toll Roads and Avoid Urban Areas from the Route Options menu if required - you can select both or neither if you wish.
  - Enable or disable the Back-on-Track™ feature from the Rerouting menu – enable Automatic Rerouting if you want the iCN 630 to automatically update the planned route when you take a wrong turn.
- 3 Use the Guidance setting screen to:
  - Choose the type of voice you wish from the Voice Scheme menu – use the left/right toggle button to scroll through the list of options.
  - Choose the Distance Units that you require – all measurements (e.g. Distance to Go), map scales, navigation screens and voice announcements can be programmed as kilometres or miles.
  - Enable or disable the compass on the map screens.



### Points of Interest Settings

There are usually a very large number of Points of Interest in any one geographical region. This function allows you to select only those categories that you might need. For example you may be interested only in accommodation and entertainment venues, and may want to disable such categories as schools and churches.



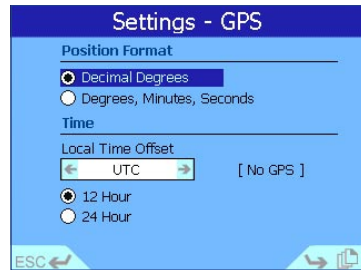
- 1 From the Main Menu, select SETTINGS, then POINTS OF INTEREST.
- 2 Enable the “Show Icons on Map” option from the Display menu if you want the Points of Interest to be displayed on your maps.
- 3 Select the Points of Interest that you wish to be enabled from the Categories menu.

Press  or select Page Fwd in the bottom right-hand corner to view more categories.



## GPS Settings

This function allows you to modify the format of some of the information displayed in the GPS status screens.



- 1 From the Main Menu, select SETTINGS, then GPS.
- 2 Select the format to display GPS position from the Position Format menu.
- 3 Set the local time by using the table below to help program the Local Time Offset. Local time is derived by an offset from the UTC (the Universal Time Clock). Or:

Scroll through UTC offset until time on right hand side is the same as your local time (you need a GPS fix to use the this method).

	Conversion from UTC
ADT - Atlantic Daylight	-3 hours
AST - Atlantic Standard	-4 hours
EDT - Eastern Daylight	
EST - Eastern Standard	-5 hours
CDT - Central Daylight	
CST - Central Standard	-6 hours
MDT - Mountain Daylight	
MST - Mountain Standard	-7 hours
PDT - Pacific Daylight	
PST - Pacific Standard	-8 hours
ADT - Alaskan Daylight	
ALA - Alaskan Standard	-9 hours
HAW - Hawaiian Standard	-10 hours
Nome, Alaska	+1 hour
CET - Central European	
FWT - French Winter	
MET - Middle European	
MEWT - Middle European Winter	
SWT - Swedish Winter	
EET - Eastern European, USSR Zone 1	+2 hours
BT - Baghdad, USSR Zone 2	+3 hours
ZP4 - USSR Zone 3	+4 hours
ZP5 - USSR Zone 4	+5 hours
ZP6 - USSR Zone 5	+6 hours
WAST - West Australian Standard	+7 hours
CCT - China Coast, USSR Zone 7	+8 hours
JST - Japan Standard, USSR Zone 8	+9 hours
EAST - East Australian Standard GST	+10 hours
Guam Standard, USSR Zone 9	
IDLE - International Date Line	+12 hours
NZST - New Zealand Standard	
NZT - New Zealand	

- 4 Select the time format that you wish to use – 12 hour clock or 24 hour clock.



- 5 Go to the Settings – Simulator screen by pressing or selecting Page Fwd.
- 6 Enable the Auto Simulate box to run an automatic route simulator. This allows you to program a route without a GPS fix (for example, from inside a building), and view the route without going anywhere. Refer to the section below for more information on using the Automatic Simulator.
- 7 Enable the Repeat box to let the automatic route simulator run continuously.



### User Settings

Select **SETTINGS** then **ABOUT** from the Main Menu to view the software version and copyright of the unit.

The User Settings function allows you to quickly clear some or all of the information that you have stored in the unit – for example your Favourites. You can also disable the tutorial that is automatically run when you power up the unit.



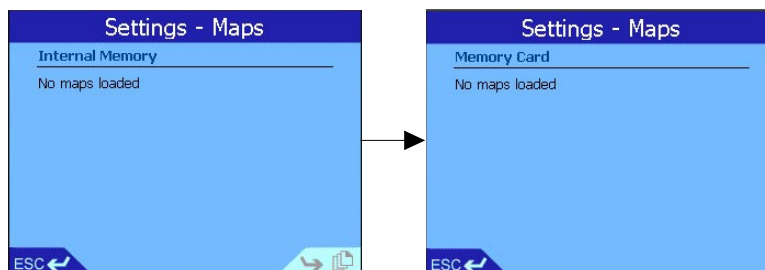
Note: it is advisable to backup your Settings, Favourites and Shortcuts regularly, and before using the Clear Lists function. Refer to Section 3 Installing Software and New Maps – Backing Up Device Settings for more information.

- 1 From the Main Menu, select **SETTINGS**, then **USER**.
- 2 Enable or disable the “Show at Startup” box in the Tutorial menu.
- 3 Enable or disable the Driver Protection screen.
- 4 If you wish to clear any of the information you have stored, simply scroll to the appropriate button in the Clear Lists menu and press **OK**.



### Maps

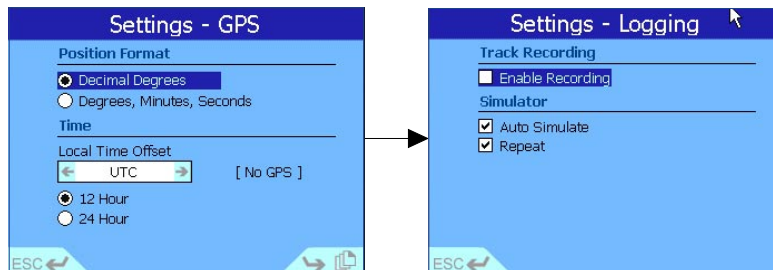
The maps setting allows you to manage maps loaded on both the internal memory and a secure Digital (SD) card. Maps will only be loaded when the unit is turned on if the check boxes are ticked.



# 13 AUTOMATIC ROUTE SIMULATOR

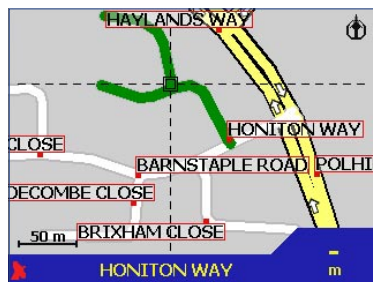
The automatic route simulator allows you to program a route without a GPS fix (for example, from inside a building), and view the route without going anywhere.

To use the auto simulator, you must first set a departure point and a destination. There are many ways to do this, but here is an example of one way you can set up the auto simulator.



- 1 From the Main Menu, select SETTINGS, then USER.
- 2 Go to the Settings - GPS screen by pressing or selecting Page Fwd. Enable the Auto Simulate box.
- 3 Return to the Main Menu, and select MAP.
- 4 Press **OK** to display gridlines – you are now in the manual Map Browser screen.

Press ESC at any time to return to the automatic Map Browser screen.



If you don't want to use the Map Browser screen to select your destination, use one of the other methods described in Section 7 Setting Your Destination.

- 5 Use the 8-way toggle button to position the intersection of the gridlines over the DEPARTURE point that you require. When the gridlines are over a street, the street name is shown along the bottom of the screen.
- 6 Press **OK** to select the location. The address details are automatically displayed.
- 7 Select START to program this location as your departure point.
- 8 You are then returned to the Map Browser screen. Press **OK** to display gridlines.
- 9 Again, use the gridlines to select the DESTINATION point that you require.
- 10 Press **OK** to select the location. The address details are automatically displayed.
- 11 Select GO to start the auto simulator.
- 12 To stop the auto simulator, press **MENU/Power** to return to the Main Menu. Select CANCEL ROUTE.

## 14 ACCESSORIES

A number of accessories are available for the iCN 630 In-Car navigation unit.



### External or Re-radiating Antennae

GPS signals are mainly transmitted through the windshield, and to a lesser extent, the side and rear windows. If your vehicle is fitted with an athermic (heat reflecting) or a heated windshield, GPS signals are not able to pass through the windshield, and therefore the signals getting to the unit are greatly reduced.

There are two options available to ensure that sufficient GPS signal is available to the unit:

- External antenna – this antenna is fitted by a magnet to the outside of your vehicle. They are generally installed on the roof or the boot. The cable attached to the antenna must be plugged into the side of the aerial on the iCN 630 unit, as shown in the diagram below. The cable may be threaded through the boot into the vehicle, or through a window.



- Re-radiating antenna – an alternative to the external antenna for vehicles fitted with athermic or heated windshields, or for extra GPS performance in weak signal areas.



## Memory Cards

There are two types of memory card that can be used with your iCN 630 unit to give you additional memory for storing maps. Either an SD (Secure Digital) card or an MMC (Multi Media Card) memory card can be plugged into the slot in the top of the iCN 630 unit.

Both SD and MMC are commonly available memory cards. They are used widely in many applications such as digital cameras, cellular phones and PDAs (Personal Digital Assistants). These memory cards are useful in the iCN 630 because of their small size and ability to store large amounts of map data.



To use a memory card with your unit, insert the card as shown in the diagram below.



**WARNING:** Do not remove your memory card from the iCN 630 unit while navigating. Your route will be lost and the unit will reset.

Memory cards are available in various sizes, and can be purchased from your retailer or a digital camera outlet. For general use, the recommended size to purchase is 64 Mbytes or 128 Mbytes.

The largest card that can be used by the iCN 630 is 256 Mbytes.



## Memory Card Writers

The memory card writer is device that connects to your PC via a USB port, and is used in conjunction with the iCN Desktop application to download maps to SD or MMC memory cards.

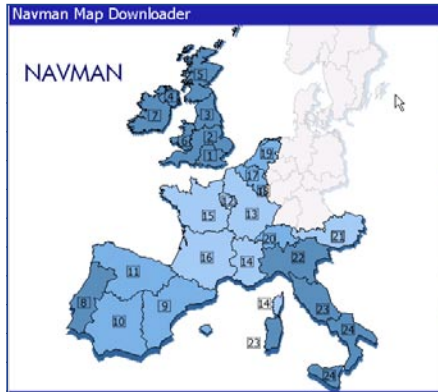
Note: SD and MMC cards must be formatted using FAT 16 format. See your PC user guide for more information on how to format SD or MMC card.



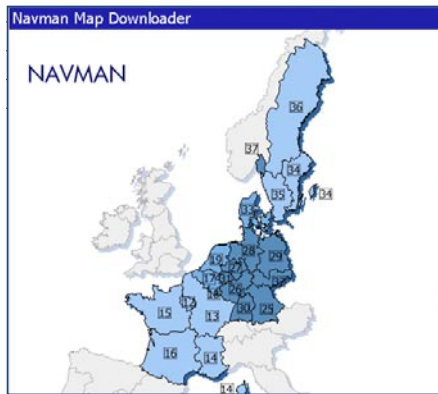


# 15 AVAILABLE MAPS

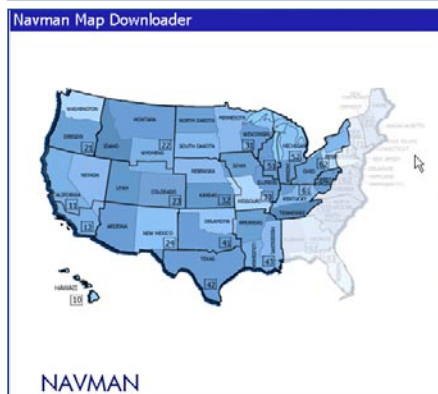
A number of maps are supplied with your unit on CD-ROM. Depending on the country in which you have purchased your unit, the following country maps are available:



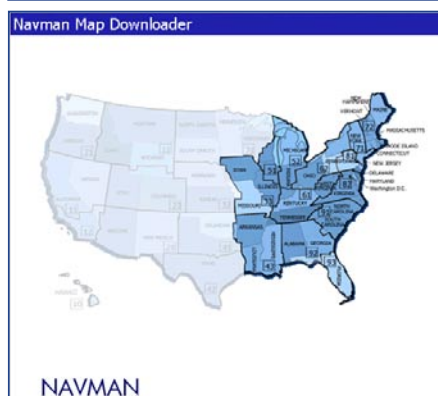
Europe disk 1



Europe disk 2



US disk 1



US disk 2

# 16

---

## FREQUENTLY ASKED QUESTIONS



### **How much does the iCN 630 cost to run once I have installed it?**

Nothing! The NAVMAN GPS receiver uses data from satellites in orbit. This data is available, free of charge, for anyone who wants to use it.



### **Where will and where will it not work?**

As long as the NAVMAN GPS receiver has a clear view of the sky, with the aerial pointed towards the sky, it will work anywhere on Earth, accurately reporting your current Latitude, Longitude, heading and speed. However, in order for GPS data to be correctly displayed on the map, you will need to have the relevant map loaded into your iCN 630 unit. Refer to Section 3 Installing Software and New Maps for more information.

Please note, some car manufacturers are using athermic (heat reflecting) and heated windshields which will block the GPS signal from entering the car. In this case, you will need to use an external antenna or a re-radiating antenna in conjunction with your iCN 630 unit.



### **How accurate it is?**

Accuracy of the GPS system can and will vary slightly. For 95% of the time, it is accurate to within 5 m.



### **How often is the position updated?**

The GPS receiver updates your location every second.

# 17 TROUBLESHOOTING

For detailed troubleshooting information, please refer to the website <http://www.navman.com>.



## **I cannot get a GPS fix – what could be wrong?**

Check the satellite icon in the bottom left hand corner of the Map View screens – the satellite will be coloured red if you have no GPS fix. If the satellite is coloured green, then the unit has a satisfactory GPS fix to operate.

You can also view the GPS Status Screens to get more information on the GPS fix that your unit currently has – for more information, refer to Section 11 Using the GPS Status Information.



## **If you do not appear to have a GPS fix, check the following points:**

- Make sure that the aerial on the unit has been flipped outwards and upwards, so that it has a clear view of the sky.
- Ensure that the vehicle does not have an athermic (heat reflecting) or a heated windshield – these cut out all electromagnetic signals including GPS signals. Owners of vehicles fitted with athermic or heated windshields should purchase a third party GPS re-radiating antenna to ensure adequate GPS signal reception. Please refer to the website [www.navman.com](http://www.navman.com) for an updated list of vehicle models using these windshields.
- The very first time you use the unit, the unit may take several minutes to get a “first fix”. This is the time when it calibrates itself and locates the satellites. The information it discovers in this time is remembered, and from that point on it should take less than 2 minutes to get a fix. If you travel overseas, the unit will take up to 10 minutes to recalibrate itself and acquire a first fix.



## **Is the system NMEA (National Marine Electronics Association) compliant?**

- Yes - all NAVMAN GPS receivers support NMEA 0183 Ver 2.20 and communicate at 57,600 Baud to increase the performance of the receiver.



## **The GPS seems to lose its fix randomly – why is this?**

- Many things can affect the GPS reception. It is always best to be outdoors with a clear view of the sky.
- The GPS receiver will continue to search for a signal, and automatically re-calculate the route once reception is restored.



**The iCN Desktop application will not allow me to load any more maps into my unit.  
What can I do?**

The iCN 630 unit has 64 Mbytes of internal memory available for storing maps. It is likely that you have used up all this memory. To store more maps, choose one of the following:

- Delete a map that you do not require any more. For information on deleting maps, refer to Section 3 Installing Software and New Maps – Installing Maps. Remember that you can back up Settings, Shortcuts and Favourites to your PC first if you wish to load a new set of maps.
- Purchase an SD or MMC memory card. These cards are available from your retailer in a number of sizes – the recommended size to use is 128 Mbytes or 256 Mbytes. The memory card plugs into the top of your iCN 630 unit, and gives you more memory to store additional maps.



**There are no audible instructions when I am driving to my destination –  
What could be wrong?**

- It is likely that the volume is turned down. Hold down the volume + button on the right hand side of your unit to increase the volume. Remember, if you give the volume button a short press, the very next instruction will be repeated.



**My passenger often programs in our destination as I drive. Can I turn off the Driver  
Protection screen?**

- Yes – this screen can be disabled in the User Settings Menu. From the Main Menu, select Settings, then User. Make sure that the check box labelled “Driver Protection - Warn driver when operating unit” is not ticked.



**The tutorial keeps running every time I start up my unit – can I turn it off?**

- Yes – the tutorial can be disabled in the User Settings Menu. From the Main Menu, select Settings, then User. Make sure that the check box labelled “Tutorial – Show at startup” is not ticked.



**My unit will not start up – what should I do?**

- Check that you have followed the instructions in Section 3 Installing Software and New Maps correctly. If your unit still does not run, take the unit to your retailer.



## End User License and Warranty Agreement

Software Product License:

### IMPORTANT - Please read carefully

NAVMAN (THE LICENSOR) IS WILLING TO LICENSE THE ICN 630 SmartMAP SOFTWARE (THE SOFTWARE) TO YOU (THE CUSTOMER) ONLY IF YOU ACCEPT ALL THE TERMS OF THIS LICENCE. PLEASE READ THE TERMS CAREFULLY, BECAUSE USING THIS SOFTWARE WILL BE DEEMED TO BE YOUR ACCEPTANCE THAT YOU ARE USING IT ON THE FOLLOWING TERMS.

IF YOU DO NOT AGREE TO THE TERMS OF THIS LICENCE DO NOT INSTALL OR USE THE SOFTWARE AND RETURN THIS PRODUCT PROMPTLY, INCLUDING ALL PACKAGING AND WRITTEN MATERIALS, TO THE LICENSOR'S REPRESENTATIVE AND ANY AMOUNT YOU MAY HAVE PAID WILL BE REFUNDED TO YOU (LESS ANY DELIVERY AND HANDLING CHARGES).

1. The Licensor grants to the Customer a non-exclusive, non-transferable licence to use: (a) one copy of the Software on one of the Customer's handheld devices; and (b) the accompanying materials, including any manuals contained in the Software (the Materials), in accordance with the terms and conditions of this Licence.
2. Where the Customer uses the Software on a handheld or any other device (the Device) in a vehicle, the Customer must not place, secure or use the handheld device in a manner that may cause accidents, personal injury or property damage or in any way obstruct the visibility of the Customer. The Customer is solely responsible for observing safe driving practices and will not operate the Software while operating a vehicle.
3. The copyright and all other intellectual property rights in the Software and Materials (including any enhancements or modifications) are vested in the Licensor. The Customer must not to rent, lease, reproduce, translate, adapt, vary, reverse-engineer or modify the Software or Materials nor communicate the same to any person other than in accordance with the terms of this Licence.
4. The Customer may not copy the Software or Materials except that one copy of the Software may be made to the extent that such copying is necessary for the Customer's own backup purposes.
5. Except for the warranty provided by the Licensor for the product that includes the Software the Licensor expressly excludes to the fullest extent permitted by law all representations or warranties, express or implied (except any which may not lawfully be excluded), including the implied warranties of merchantability and fitness for a particular purpose.
6. The Licensor will not in any circumstances be liable under the law of tort, contract or otherwise for any indirect or consequential loss or damage, including any loss of profits, however caused, arising in connection with the use of, or inability to use, the Software.  
If any limitation or exclusion or liability contained in this Licence is held to be invalid for any reason and the Licensor becomes liable for loss or damage that would otherwise have been excluded, that liability will be limited to the total amount actually paid by the Customer for the Software.
7. The Licensor may terminate this Licence immediately if the Customer breaches any of its obligations under this Licence. Immediately following termination of this Licence the Customer must deliver to the Licensor's Representative, or destroy all copies of, the Software and Materials in whatever form possessed by the Customer.

### Limited Warranty:

IMPORTANT: The following terms and conditions may vary from country to country. Please check with Your Navman dealer from where You purchased the product.

**Hardware Product:** Navman warrants its products to be free from defects in materials or workmanship under normal use for one year from the date of purchase (the Warranty Period) to the original owner (You). To claim under this warranty, You must return the product to the place of purchase, or a service centre approved by Navman (Service Centre). You must produce an original sales receipt as proof of purchase. You will be solely responsible for all shipping charges, freight, insurance and proper packaging to prevent breakage in transit. Navman will, at its discretion, repair or replace any defective product or its components at no cost to You for parts and labour. The replacement product or component takes on the warranty status of the original product or component. This is Your exclusive remedy for defective products.

**Limitations:** This warranty does not apply to products that have been damaged or rendered defective: (a) as a result of incorrect installation, misuse, mishandling, misapplication, accident, abuse, breakage or other external causes; (b) by operation outside the usage specifications stated in the product documentation; (c) by modification or service other than by Navman or its approved Service Centres.

**Software Product:** Navman warrants that (a) the software will perform substantially in accordance with the accompanying written materials for a period of 90 days from the date of purchase, and (b) any technical support provided by Navman or its approved Service Centres shall make commercially reasonable efforts to solve any problem or issues. Some countries, states and jurisdictions do not allow limitations on duration of an implied warranty, so the above limitation of 90 days may not apply to You.

### Limitation of Liability

To the fullest extent permitted by law, Navman will not be liable in any event, whether in tort (including negligence), contract or otherwise for any damage including loss of profits, any consequential, indirect or special damage, loss or injury of any kind suffered by You or any other person. Except as expressly set out in this warranty, Navman makes no other warranties, express or implied, including any implied warranties of merchantability and fitness for a particular purpose. If any limitation or exclusion or liability contained in this warranty is held to be invalid for any reason and Navman becomes liable for loss or damage that would otherwise have been excluded, such liability will be limited to the total amount actually paid by You for the product.



### **Contact Us**

Support for the United Kingdom and Europe:

Navman Mobile Limited  
The Office Building,  
Gatwick Road,  
Manor Royal,  
Crawley,  
West Sussex, RH10 9RZ,  
United Kingdom

e-mail: [support@navman-mobile.com](mailto:support@navman-mobile.com)

website: [www.navman.com](http://www.navman.com)



### **Copyright**

© 2003 Navman New Zealand Limited.

Navman is a registered trademark of Navman NZ Limited. All rights reserved.

© 2002 Navigation Technologies

NAVTECH ON BOARD is a registered trademark of Navigation Technologies Corporation.  
All rights reserved.